

Contract No. HK/2009/01

Wan Chai Development Phase II – Central -Wan Chai Bypass at
Hong Kong Convention and Exhibition Centre

Construction Activities for Three Months Rolling

Construction Activities	June 2017	July 2017	August 2017
Reinstatement of Amenity Area			
Road and Drain Works			

Activity ID	Activity Name	On Dur	Rem Dur	Scheduled/ Actual Start	Scheduled/ Actual Finish	Total Float	Calendar	2017																							
								July					August					September					October								
								25	02	09	16	23	30	06	13	20	27	03	10	17	24	01	08	15	22						
S10-T5-B10-1380	Roof - Curing	12	0	20-Jun-17 A	01-Jul-17 A		Calendar Day	Roof - Curing																							
S10-T5-B10-1390	Roof - Scaffolding Dismantling	7	0	03-Jul-17 A	10-Jul-17 A		Calendar Day	Roof - Scaffolding Dismantling																							
Bay 9																															
S10-T5-B9-1360	Roof - Rebar Fixing & Formwork	11	0	17-May-17 A	21-Jun-17 A		Calendar Day	Roof - Rebar Fixing & Formwork																							
S10-T5-B9-1370	Roof - Concrete	1	0	22-Jun-17 A	22-Jun-17 A		Calendar Day	Roof - Concrete																							
S10-T5-B9-1380	Roof - Curing	10	0	23-Jun-17 A	02-Jul-17 A		Calendar Day	Roof - Curing																							
S10-T5-B9-1390	Roof - Scaffolding Dismantling	5	0	03-Jul-17 A	08-Jul-17 A		Calendar Day	Roof - Scaffolding Dismantling																							
Bay 8A - Roof only																															
S10-T5-B8A-1380	Roof - Curing	12	0	11-Jun-17 A	22-Jun-17 A		Calendar Day	Roof - Curing																							
S10-T5-B8A-1390	Roof - Scaffolding Dismantling	7	0	29-Jun-17 A	06-Jul-17 A		Calendar Day	Roof - Scaffolding Dismantling																							
Bay 8																															
S10-T5-B8-1380	Roof - Curing	12	0	16-Jun-17 A	27-Jun-17 A		Calendar Day	Roof - Curing																							
S10-T5-B8-1390	Roof - Scaffolding Dismantling	7	0	28-Jun-17 A	06-Jul-17 A		Calendar Day	Roof - Scaffolding Dismantling																							
Bay 7																															
S10-T5-B7-1360	Roof - Rebar Fixing & Formwork	12	0	03-May-17 A	23-Jun-17 A		Calendar Day	Roof - Rebar Fixing & Formwork																							
S10-T5-B7-1370	Roof - Concrete	1	0	24-Jun-17 A	24-Jun-17 A		Calendar Day	Roof - Concrete																							
S10-T5-B7-1380	Roof - Curing	10	0	25-Jun-17 A	04-Jul-17 A		Calendar Day	Roof - Curing																							
S10-T5-B7-1390	Roof - Scaffolding Dismantling	5	0	05-Jul-17 A	10-Jul-17 A		Calendar Day	Roof - Scaffolding Dismantling																							
Bay 6A - Roof only																															
S10-T5-B6A-1413	Roof - Curing	12	0	15-Jun-17 A	26-Jun-17 A		Calendar Day	Roof - Curing																							
S10-T5-B6A-1414	Roof - Scaffolding Dismantling	7	0	27-Jun-17 A	04-Jul-17 A		Calendar Day	Roof - Scaffolding Dismantling																							
Bay 3 (3 Cells)																															
S10-T5-B3-1380	Roof - Curing	12	0	18-Jun-17 A	30-Jun-17 A		Calendar Day	Roof - Curing																							
S10-T5-B3-1390	Roof - Scaffolding Dismantling	3	0	04-Jul-17 A	08-Jul-17 A		Calendar Day	Roof - Scaffolding Dismantling																							
Bay 2 (3 Cells)																															
S10-T5-B2-1350	Roof - Curing	12	0	18-Jun-17 A	29-Jun-17 A		Calendar Day	Roof - Curing																							
S10-T5-B2-1360	Roof - Scaffolding Dismantling	5	0	30-Jun-17 A	05-Jul-17 A		Calendar Day	Roof - Scaffolding Dismantling																							
Bay 1 (3 Cells) (Western End Bay)																															
S10-T5-B1-1360	Roof - Rebar Fixing & Formwork	16	0	15-May-17 A	24-Jun-17 A		Calendar Day	Roof - Rebar Fixing & Formwork																							
S10-T5-B1-1370	Roof - Concrete	1	0	25-Jun-17 A	25-Jun-17 A		Calendar Day	Roof - Concrete																							
S10-T5-B1-1380	Roof - Curing	12	0	26-Jun-17 A	06-Jul-17 A		Calendar Day	Roof - Curing																							
S10-T5-B1-1390	Roof - Scaffolding Dismantling	5	0	08-Jul-17 A	12-Jul-17 A		Calendar Day	Roof - Scaffolding Dismantling																							
Outstanding Works																															
S10-T5-OUT-1020	TP5 - Carry out defects identification and rectification works	80	77	17-Jul-17 A	04-Oct-17	-146	Calendar Day	TP5 - Carry out defects																							
Section 11 of the Works - Remainder of Works																															
Marine Works at WCR1																															
Reclamation Works																															
Precast Units Installation																															
S11-S1-1820	WCR1 - Remaining Installation of the Corrosion Monitoring System	18	18	29-Sep-17	19-Oct-17	-171	HK Working Day	WCR1 - Remaining Installation																							
Marine Works at WCR2																															
S11-R2-1900	Complete remaining works of removing armour stone, berm stone and vertical seawall down to +1.5mPD	31	31	21-Sep-17	22-Oct-17	-186	Calendar Day	WCR2 - Remaining Installation																							
Marine Works at WCR3																															
S11-R3-2060	WCR3 - Remaining Installation of the Corrosion Monitoring System	18	18	11-Sep-17	28-Sep-17	-171	HK Working Day	WCR3 - Remaining Installation																							
Demolition Works																															
S11-DEMO-1310	Demolition of abandoned seawall down to +1.5mPD - at the south of Tunnel Portion 5	12	12	28-Aug-17	08-Sep-17	-102	HK Working Day	Demolition of abandoned seawall down to +1.5mPD - at the south of Tunnel Portion 5																							
Formation and Hard Landscaping Works																															
S11-FM-5000A	Tunnel Portion 5 Backfilling (Sorted Public Fill or alternative filling material 66,000m3; 1400 to 2000 m3/d)	47	27	07-Jul-17 A	15-Aug-17	-465	Calendar Day	Tunnel Portion 5 Backfilling (Sorted Public Fill or alternative filling material 66,000m3; 1400 to 2000 m3/d)																							
S11-FM-5000B	Completion of Tunnel Portion 5 Backfilling	0	0		15-Aug-17	-465	Calendar Day	Completion of Tunnel Portion 5 Backfilling																							
Misc. Works																															
Removal of Temporary D-Wall CH 3630 to CH 3710																															
S11-RTC-3340	Preparation for D-Wall Cutting - Advance Coring inside D Wall (73 nos. for cutting, 2 machines @ 1no./machine/day)	50	50	14-Aug-17*	06-Oct-17	-631	HK Working Day	Preparation for D-Wall Cutting																							
S11-RTC-3345	Preparation for D-Wall Cutting - Full Coring inside D Wall (144 nos. for lifting, 2 machines@1no./machine/day)	87	87	06-Oct-17	09-Jan-18	-631	HK Working Day	Preparation for D-Wall Cutting																							
Hung Hing Road Flyover Reinstatement																															
S11-HH-4040	Reinstatement of HHR Flyover - Procurement of Movement Joint for the bridge	60	30	20-Jun-17 A	18-Aug-17	-780	Calendar Day	Reinstatement of HHR Flyover - Procurement of Movement Joint for the bridge, Reinstatement of HHR Flyover																							
S11-HH-4042	Reinstatement of HHR Flyover - Delivery of Movement Joint for the bridge	45	45	19-Aug-17	02-Oct-17	-780	Calendar Day	Reinstatement of HHR Flyover																							

◆ Milestone	<p>CHUN WO - CRGL</p> <p>JOINT VENTURE</p>	<p>CEDD CONTRACT NO. HK/2009/02</p> <p>WD II - Central Wanchai Bypass at Wan Chai East (Contract 2)</p> <p>3-MONTH ROLLING PROGRAMME (data date 20-Jul-17)</p>	Date	Revision	Checked	Approved
◆ Critical Milestones						
█ Current Works						
█ Critical Works						
█ Remaining Level of Effort						



Activity ID	Activity Name	Remaining Dur	Early Start	Early Finish	Activity % Complete	2017					
						Jun	Jul	Aug	Sep	Oct	
HK/2012/08 Revised Works Programme Rev.11(DD 30 Jun 2017)											
Works for Section Completion											
Construction											
CWB Tunnel & Slip Road Structures and Facilities											
CWB D - Slip Road 1 - Trough / Retaining Wall											
CWB D - Slip Road 1 - Trough/Retaining Wall Structure											
SIIA12708	Sec II A - CWB SR1 Trough & RW: Trough Structure bay 3: Construct wall	11	15-Jun-17 A	10-Jul-17	26.67%						
SIIA12712	Sec II A - CWB SR1 Trough & RW: Trough Structure bay 2: Construct Wall & curing	37	11-Jul-17	16-Aug-17	0%						
SIIA12732	Sec II A - CWB SR1 Trough & RW: Trough Structure bay 2 & 3: waterproofing	6	17-Aug-17	22-Aug-17	0%						
SIIA12752	Sec II A - CWB SR1 Trough & RW: Trough Structure bay 2 & 3: construct box out area & backfilling	28	23-Aug-17	19-Sep-17	0%						
SIIA12772	Sec II A - CWB SR1 Trough & RW: Trough Structure bay 2 & 3: road works	10	20-Sep-17	29-Sep-17	0%						
SIIA12800	Sec II A - CWB SR1 Trough & RW: Trough Structure bay 1b: Construct wall	31	09-Aug-17	08-Sep-17	0%						
SIIA13702	Sec II A - CWB SR1 Trough & RW: Trough Structure bay 1a: Construct wall & curing	20	09-Sep-17	28-Sep-17	0%						
SIIA13722	Sec II A - CWB SR1 Trough & RW: Trough Structure bay 1a & 1b: waterproofing	8	29-Sep-17	06-Oct-17	0%						
SIIA13800	Sec II A - CWB SR1 Trough & RW: Retaining Walls RW3 & RW4 (bay 1 base slab & wall)	23	11-Jul-17	02-Aug-17	0%						
SIIA13860	Sec II A - CWB SR1 Trough & RW: Retaining Walls RW3 & RW4 (bay 2 base slab & wall)	23	03-Aug-17	25-Aug-17	0%						
Section III A - Road A2, A4 & A5											
Roadwork & Utilities - Section 1 (L1806 - L1801)											
SIIA10280	Sec III A - roadwork and utilities section 1 carriageway - TTA Stage 4A -1: road & drainage works	8	10-Apr-17 A	10-Jul-17	84.62%						
SIIA10282	Sec III A - roadwork and utilities section 1 carriageway - TTA Stage 4A -2: road & drainage works	21	11-Jul-17	03-Aug-17	0%						
SIIA10284	Sec III A - roadwork and utilities section 1 carriageway - TTA Stage 4A -3: road & drainage works	25	04-Aug-17	01-Sep-17	0%						
Roadwork & Utilities - Section 2 (L1810 - L1806)											
SIIA12470	Sec III A - roadwork and utilities section 2 carriageway - Relocate site access & trim down D-wall	16	15-Jul-17*	02-Aug-17	0%						
SIIA12490	Sec III A - roadwork and utilities section 2 carriageway - Drainage works (L1810 - L1806, L2202 - L2202A)	61	03-Aug-17	13-Oct-17	0%						
Roadwork & Utilities - Section 3 (L1808 - L1102)											
SIIA12705	Sec III A - roadwork and utilities section 3 carriageway - Trimming down d-wall	14	03-Aug-17	18-Aug-17	0%						
SIIA12710	Sec III A - roadwork and utilities section 3 carriageway - Drainage works (L1301 - L1102)	21	19-Aug-17	12-Sep-17	0%						
SIIA12750	Sec III A - roadwork and utilities section 3 carriageway - gully pipe (L1808A - L1102)	14	13-Sep-17	28-Sep-17	0%						
SIIA12762	Sec III A - roadwork and utilities section 3 carriageway - watermain	11	29-Sep-17	12-Oct-17	0%						
Roadwork & Utilities - Section 4 (L1406 - L1401)											
SIIA12930	Sec III A - Remove pipe pile and concrete paving	8	10-Jun-17 A	10-Jul-17	82.98%						
SIIA12935	Sec III A - roadwork and utilities section 4 carriageway - Drainage works (L1406-L1401)	45	11-Jul-17	31-Aug-17	0%						
SIIA12950	Sec III A - roadwork and utilities section 4 carriageway - gully pipe (L1406 -L1401)	31	01-Sep-17	07-Oct-17	0%						
Roadwork & Utilities - Section 5 (L1411 - L1406)											
SIIA13150	Sec III A - roadwork and utilities section 5 carriageway - Drainage works (L1411 - L1406)	20	01-Jun-17 A	24-Jul-17	54.55%						

Data Date: 30-Jun-17

- ◆ Current Milestone
- Actual Work
- Critical Remaining Work
- Remaining Work
- Remaining Level of Effort

3-Months Rolling Programme for Non-CR III (July - September 2017)
(Ref. to Revised Works Programme Rev.11)

Date	Revision	Checked	Approved
10-Jul-17	11		



Activity ID	Activity Name	Remaining Dur	Early Start	Early Finish	Activity % Complete	2017				
						Jun	Jul	Aug	Sep	Oct
SIIIA13210	Sec III A - roadwork and utilities section 5 carriageway - gully pipe (L1411 - L1406)	25	25-Jul-17	22-Aug-17	0%					
SIIIA13230	Sec III A - roadwork and utilities section 5 carriageway - road formation: Crossroad duct(HEC), road kerb & formation	29	23-Aug-17	25-Sep-17	0%					
SIIIA13250	Sec III A - roadwork and utilities section 5 carriageway - black top	7	26-Sep-17	04-Oct-17	0%					
Roadwork & Utilities - Section 6 (L1102 - L1411)										
SIIIA13370	Sec III A - roadwork and utilities section 6 carriageway - Drainage works (Culvert L - L1411)	28	05-Jun-17 A	02-Aug-17	42.86%					
SIIIA13372	Sec III A - roadwork and utilities section 6 carriageway - Backfilling of water channel adjacent culvert K bay 16	14	18-Aug-17	02-Sep-17	0%					
SIIIA13373	Sec III A - roadwork and utilities section 6 carriageway - Backfilling of water channel from culvert K bay 16 to 20B	20	24-Aug-17	15-Sep-17	0%					
SIIIA13374	Sec III A - roadwork and utilities section 6 carriageway - Drainage works (L1101-L1102)	22	16-Sep-17	12-Oct-17	0%					
SIIIA13430	Sec III A - roadwork and utilities section 6 carriageway - gully pipe (Culvert L - L1411)	30	03-Aug-17	06-Sep-17	0%					
SIIIA13444	Sec III A - roadwork and utilities section 6 carriageway - watermain	7	07-Sep-17	14-Sep-17	0%					
SIIIA13445	Sec III A - roadwork and utilities section 6 carriageway - utilities: HEC, HGC, PCCW	14	15-Sep-17	30-Sep-17	0%					
Section V - Remaining At-Grade Road; Remove 2nd Stage ITA										
Roadwork & Utilities										
Section 1 (L1504 - L1900)										
SV12420	Sec V - Roadwork & Utilities Section 1 Carriageway - Drainage Works (L1905-L1906, L1504-L1503)	22	16-May-17 A	26-Jul-17	74.12%					
SV12450	Sec V - Roadwork & Utilities Section 1 Carriageway - Gully pipe (L1903 - L1906, L1501-L1504)	64	27-Jul-17	10-Oct-17	0%					
Section 2 (L1510 - L1504)										
SV12600	Sec V - Roadwork & Utilities Section 2 Carriageway - Drainage Works (L1501-L1507, L1406B-L1406A, L1611-L1609)	41	01-Jun-17 A	17-Aug-17	50%					
SV12602	Sec V - Roadwork & Utilities Section 2 Carriageway : Backfilling	7	18-Aug-17	25-Aug-17	0%					
SV12603	Sec V - Roadwork & Utilities Section 2 Carriageway - Gully pipe (L1501 - L1507 & L1611 - L1609)	30	26-Aug-17	29-Sep-17	0%					
Section 3 (Culvert L - L1504)										
SIV12762	Sec V - Roadwork & Utilities Section 3 Carriageway - Gully pipe (Culvert L - L1504)	11	08-Jun-17 A	13-Jul-17	63.33%					
SIV12765	Sec V - Roadwork & Utilities Section 3 Carriageway - Demolish D wall	25	16-Aug-17*	13-Sep-17	0%					
SIV12766	Sec V - Roadwork & Utilities Section 3 Carriageway - Drainage Works (Culvert L - L1611)	26	14-Sep-17	14-Oct-17	0%					
Section VI D - Area 8B & 10										
WDII Box 1 Construction										
WDII Box 1 ELS										
WD-C4120	Sec VIC - Joint Survey of excavated level	0	18-Oct-16 A	30-Jun-17	100%					
WDII Box 1 Remaining Structure										
SVID-6130	Sec VID - Remaining of Box I : Trimming bored pile A4 & B3 and casting	7	25-Jun-17 A	06-Jul-17	30%					
SVID-6140	Sec VID - Remaining of Box I : Construct remaining wall & roof slab	25	07-Jul-17	31-Jul-17	0%					
SVID-6220	Sec VID - Remaining of Box I : waterproofing for roof slab	5	01-Aug-17	05-Aug-17	0%					
SVID-6340	Sec VID - Box I South: Remove ELS and trimming pipe pile	5	12-Jun-17 A	04-Jul-17	68.75%					
SVID-6360	Sec VID - Box I South: Remove SIC coarse screen hood	16	05-Jul-17	20-Jul-17	0%					
SVID-6380	Sec VID - Box I South: Install pile cap & box beam	15	21-Jul-17	04-Aug-17	0%					
SVID-6620	Sec VID - Backfilling stage 1: backfill in Box I	22	05-Aug-17	26-Aug-17	0%					
SVID-6680	Sec VID - Backfilling stage 4: backfill in dry dock	30	18-Aug-17	16-Sep-17	0%					
SVID10100	Achievement of Section VID of the Works	0		26-Aug-17	0%					
Section IV - Slip Road 3										



Activity ID	Activity Name	Remaining Dur	Early Start	Early Finish	Activity % Complete	2017				
						Jun	Jul	Aug	Sep	Oct
Roadwork & Utilities										
Section 1 (L16608 - L1601)										
SIV11740	Sec IV - Re-Poession of the Area	0	24-Aug-17*		0%					
SIV11760	Sec IV - Roadwork & Utilities at SR3 Section 1 Carriageway - Drainage Works (L1607-L1601, L2004-L2005)	39	24-Aug-17	09-Oct-17	0%					
Section 2 (L2301 - L2103)										
SIV11940	Sec IV - Roadwork & Utilities at SR3 Section 2 Carriageway - Drainage Works (L2301-L2103)	21	16-Aug-17*	08-Sep-17	0%					
SIV11941	Sec IV - Roadwork & Utilities at SR3 Section 2 Carriageway - Drainage Works (L608-L1609)	30	09-Sep-17	14-Oct-17	0%					
Section 3 (M/H1.6 - L2301)										
SIV12100	Sec IV - Roadwork & Utilities at SR3 Section 3 Carriageway - Drainage Works (M/H1.7 - L2301)	31	09-Sep-17	16-Oct-17	0%					
SIV12102	Sec IV - Roadwork & Utilities at SR3 Section 3 Carriageway - M1.7-M1.6: Demolish seawall	20	16-Aug-17*	07-Sep-17	0%					
SIV12103	Sec IV - Roadwork & Utilities at SR3 Section 3 Carriageway - M1.7-M1.6: ELS	10	08-Sep-17	19-Sep-17	0%					
SIV12104	Sec IV - Roadwork & Utilities at SR3 Section 3 Carriageway - M1.7-M1.6: Construct manhole & pipes	36	20-Sep-17	02-Nov-17	0%					
SIV12138	Sec IV - Roadwork & Utilities at SR3 Section 3 Carriageway - Utilities: HEC to MVB Plant room	38	20-Jul-17*	01-Sep-17	0%					
SIV12170	Sec IV - Roadwork & Utilities at SR3 Section 3 footpath - Utilities: TCSS & HEC to MVB plant room	43	02-Sep-17	23-Oct-17	0%					
Section VII - Remainder Works										
Retaining Wall RW5 Construction										
SVII10660	Sec VII - Retaining Wall RW5 (bay 1) - construct base slab and wall	20	19-Sep-17	12-Oct-17	0%					
SVII10800	Sec VII - Retaining wall RW5 (bay 3) - construct base slab and wall	20	19-Sep-17	12-Oct-17	0%					
Promenade Seawall Parapet Construction										
SVII13100	Sec VII - Zone A1, A2 & B: Remove temporary seawall block	21	15-Aug-17*	07-Sep-17	0%					
SVII13120	Sec VII - Zone A1, A2 & B: Construct seawall block mass concrete coping	45	08-Sep-17	01-Nov-17	0%					
SVII13200	Sec VII - Zone D: Remove temporary seawall block	21	19-Sep-17	13-Oct-17	0%					
Promenade Footpath and EVA Construction										
Section 5										
SVII13270	Sec VII - section 5 footpath - drainage works (L2203 -L2204) & U channel	49	29-Aug-17	25-Oct-17	0%					
Section X - Protection & Preservation of Trees										
Soft Landscaping Works										
SX10020	Sec X - Protection & Preservation of Trees	322	31-Jan-13 A	17-May-18	80.27%					

China State Construction Engineering (Hong Kong) Ltd.

Contract No. HY/2009/15 - Central Wan Chai By Pass - Tunnel (Causeway Bay)





Activity Name	Start	Finish	2017		
			Jul	Aug	Sep
Hung Hing Road Resurfacing	1/6/2017	30/9/2017			
Defect works inside tunnel	1/4/2017	30/9/2017			

Data Date: 20-Jul-17

HY/2009/18 Central - Wan Chai Bypass (Central Interchange)

TASK filters: 3 Months_1, Not HL.

Activity ID	Activity Name	Original Duration	Start	Finish	Total Float	2017					
						Jul	Aug	Sep	Oct		
Update 2017-07-20 CWB - Central Interchange (2014-06-20) Revised DWP R7											
PRELIMINARIES											
Access Dates & Milestones											
Commencement & Completion											
1010	Contract DLP and Establishment Works for Landscape Completion	0		20-Jul-17*	-171						
1005	Contract Construction Completion	0		20-Jul-17*	-536						
SECTION 6 - ALL WORKS IN PORTION VI											
General Surface Works											
Formation & Roadworks											
Irrigation System											
14916	Area VIII (New cross road pipes added)	140	05-Nov-15 A	02-Aug-17	-437						
14912	Area VI	78	18-Apr-16 A	22-Aug-17	-454						
14914	Area VII	78	18-Apr-16 A	15-Aug-17	-448						
14908	Area IV / Area V	78	28-Jun-16 A	02-Aug-17	-437						
14920	Area X	78	04-Jul-16 A	02-Aug-17	-437						
14918	Area IX	78	11-Jul-16 A	11-Aug-17	-445						
Roadworks											
14922	Area 1a / Area 1b	129	28-Dec-15 A	28-Jun-17 A							
14928	Area 4	18	15-Apr-16 A	03-Jul-17 A							
VO150	VO150 (Dated 03 Jul 2015) - Replacement of Damaged Lattice	18	20-Jul-17*	09-Aug-17	-443						
Finishes & Landscaping											
14948	Area 4	12	09-Nov-16 A	31-Jul-17	-435						
SECTION 7, 7A, 7B & 7C - LANDSCAPE ESTABLISHMENT											
4070	EST - Portion VA Landscape Establishment	365	23-Aug-16 A	22-Aug-17	-658						

-  Current Milestone
-  Level of Effort
-  Baseline Milestone
-  Actual Work
-  Critical Remaining Work
-  Remaining W...
-  Project Baseli...

Leighton Contractors (Asia) Limited Programme Update 82 (July 2017) THREE MONTH ROLLING

Project ID: U082
 Baseline: DCP7-2c
 Layout: Update Three Month Rolling
 U082
 Page 1 of 2

Date	Revision	Checked	Appro...
20-Jun-17	U081	AT	PT
20-Jul-17	U082	AT	PT

Data Date: 20-Jul-17

HY/2009/18 Central - Wan Chai Bypass (Central Interchange)

TASK filters: 3 Months_1, Not HL.

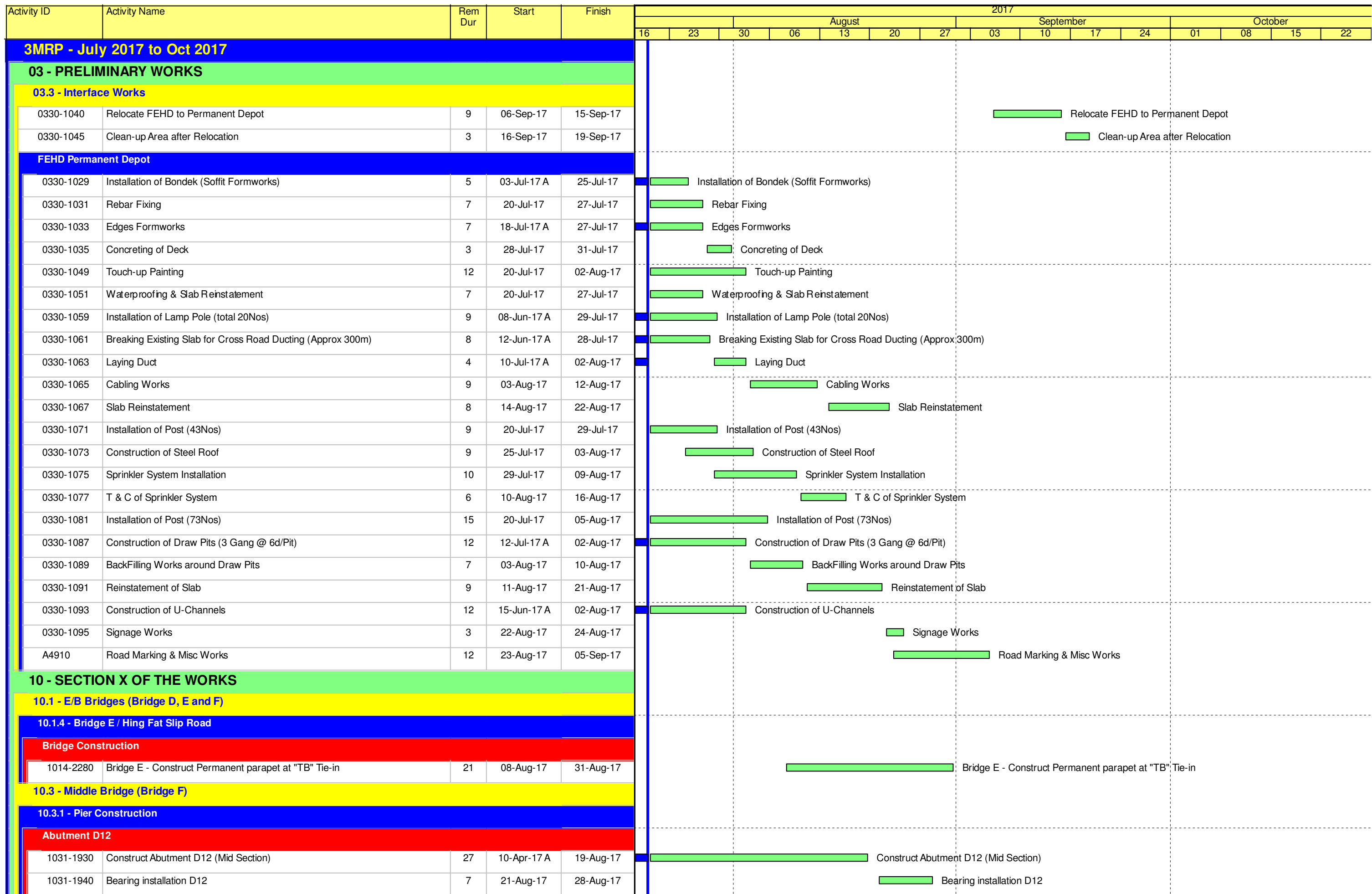
Activity ID	Activity Name	Original Duration	Start	Finish	Total Float	2017			
						Jul	Aug	Sep	Oct
4040	EST - Portion VI Landscape Establishment	365	01-Aug-17	31-Jul-18	-548				
SECTION 8 - PRESERVATION & PROTECTION OF TREES									
4100	Tree - Preservation & Protection of Existing Trees	1759	14-Dec-10 A	31-Jul-17	-548				
Key Dates for Completion of Sections									
Anticipated Completion									
1094	KD12 - Anticipated Completion	0		20-Jul-17*	-624				
1124	KD11 - Anticipated Completion	0		20-Jul-17*	-529				
1139	KD16 - Anticipated Completion	0		31-Jul-17*	-548				
1114	KD10 - Anticipated Completion	0		22-Aug-17*	-570				
Portion Handover Dates									
Anticipated Handover									
2960a	Portion IIIA Handover - Remaining (KD3 + 28 days) - (EOT 26.5 days added)	0		20-Jul-17*	-839				

- ◆ Current Milestone
- ▬ Level of Effort
- ▬ Actual Work
- ▬ Critical Remaining Work
- ▬ Remaining W...
- ▬ Project Baseli...
- ▲ Baseline Milestone

Leighton Contractors (Asia) Limited Programme Update 82 (July 2017) THREE MONTH ROLLING

Project ID: U082
 Baseline: DCP7-2c
 Layout: Update Three Month Rolling
 U082
 Page 2 of 2

Date	Revision	Checked	Appro...
20-Jun-17	U081	AT	PT
20-Jul-17	U082	AT	PT



 Remaining Level of Effort
 Remaining Work
 Actual Level of Effort
 Critical Remaining Work
 Actual Work
 Milestone

Contract HY/2009/19
Three Months Rolling Programme (20.July.2017 to 19.Oct.2017)

Activity ID	Activity Name	Rem Dur	Start	Finish	2017													
					August						September				October			
					16	23	30	06	13	20	27	03	10	17	24	01	08	15
Pier F1B2 to F4B																		
1031-1080	Existing P36/F1B2 Construct Crosshead	9	10-Jul-17 A	29-Jul-17	Existing P36/F1B2 Construct Crosshead													
1031-1100	Bearing Installation P36/F1B2	4	31-Jul-17	03-Aug-17	Bearing Installation P36/F1B2													
1031-1320	Existing P37/F2B2 Construct Crosshead	3	22-Jun-17 A	22-Jul-17	Existing P37/F2B2 Construct Crosshead													
1031-1340	Bearing Installation P37/F2B2	4	24-Jul-17	27-Jul-17	Bearing Installation P37/F2B2													
10.3.2 - Bridge Construction																		
Bridge F3B																		
1032-2240	P41/F6B - T Span Erection (6 pairs)	2	19-Jul-17 A	21-Jul-17	P41/F6B - T Span Erection (6 pairs)													
1032-2260	P40/F5B - Install Pier Segment - Place Pier Segment (2nos.)	2	20-Jul-17	21-Jul-17	P40/F5B - Install Pier Segment - Place Pier Segment (2nos.)													
1032-2280	P40/F5B - Install Pier Segment - Adjust Segment Level and Location	3	22-Jul-17	25-Jul-17	P40/F5B - Install Pier Segment - Adjust Segment Level and Location													
1032-2300	P40/F5B - Install Pier Segment - Install the Tie & Packing System	2	26-Jul-17	27-Jul-17	P40/F5B - Install Pier Segment - Install the Tie & Packing System													
1032-2320	P40/F5B - Install Pier Segment - Install MS at P40/F5B (Right) and Engage FL at P39/F4B	2	28-Jul-17	29-Jul-17	P40/F5B - Install Pier Segment - Install MS at P40/F5B (Right) and Engage FL at P39/F4B													
1032-2340	P40/F5B(MJ Right) - End Span Erection - Hanging Segments	2	31-Jul-17	01-Aug-17	P40/F5B(MJ Right) - End Span Erection - Hanging Segments													
1032-2360	P40/F5B(MJ Right) - End Span Erection - Erect Segments	1	02-Aug-17	02-Aug-17	P40/F5B(MJ Right) - End Span Erection - Erect Segments													
1032-2380	P40/F5B(MJ Right) - End Span Erection - Stitching	2	03-Aug-17	04-Aug-17	P40/F5B(MJ Right) - End Span Erection - Stitching													
1032-2400	P40/F5B(MJ Right) - End Span Erection - Formwork Fixing for and Grouting for Bearing	2	03-Aug-17	04-Aug-17	P40/F5B(MJ Right) - End Span Erection - Formwork Fixing for and Grouting for Bearing													
1032-2420	P40/F5B(MJ Right) - End Span Erection - Prestress Span Tendons	2	05-Aug-17	07-Aug-17	P40/F5B(MJ Right) - End Span Erection - Prestress Span Tendons													
1032-2440	P40/F5B(MJ Right) - End Span Erection - Remove Hanger Bar & Hanger Beam & Stitching Formwork	1	08-Aug-17	08-Aug-17	P40/F5B(MJ Right) - End Span Erection - Remove Hanger Bar & Hanger Beam & Stitching Formwork													
1032-2460	Prestress Extenral Tendon Bridge F3B	10	09-Aug-17	19-Aug-17	Prestress Extenral Tendon Bridge F3B													
1032-2480	Bridge F3B - Construct South Parapet	15	21-Aug-17	06-Sep-17	Bridge F3B - Construct South Parapet													
1032-2500	Bridge F3B - Lingitudinal Stitching	15	21-Aug-17	06-Sep-17	Bridge F3B - Lingitudinal Stitching													
1032-2520	Bridge F3B - Construct Median Barriers	18	07-Sep-17	27-Sep-17	Bridge F3B - Construct Median Barriers													
Bridge F2B																		
1032-2580	P39/F4B - Install Pier Segment - Place Pier Segment	1	03-Aug-17	03-Aug-17	P39/F4B - Install Pier Segment - Place Pier Segment													
1032-2600	P39/F4B - Install Pier Segment - Adjust Segment Level and Location	2	04-Aug-17	05-Aug-17	P39/F4B - Install Pier Segment - Adjust Segment Level and Location													
1032-2620	P39/F4B - Install Pier Segment - Grouting the Bearing Upper Plinth	2	07-Aug-17	08-Aug-17	P39/F4B - Install Pier Segment - Grouting the Bearing Upper Plinth													
1032-2640	P39/F4B - Install Pier Segment - Stressing Nailing	2	09-Aug-17	10-Aug-17	P39/F4B - Install Pier Segment - Stressing Nailing													
1032-2660	P39/F4B - Install MS at P39/F4B	2	11-Aug-17	12-Aug-17	P39/F4B - Install MS at P39/F4B													
1032-2680	P39/F4B - Install Pier Segment - Relocate MS at P40/F5B to left and Engage FL at P39/F3B	2	14-Aug-17	15-Aug-17	P39/F4B - Install Pier Segment - Relocate MS at P40/F5B to left and Engage FL at P39/F3B													
1032-2700	P39/F4B - T Span Erection (6 pairs)	4	16-Aug-17	19-Aug-17	P39/F4B - T Span Erection (6 pairs)													
1032-2720	P40/F5B(MJ Left) - End Span Erection - Hanging Segments	2	21-Aug-17	22-Aug-17	P40/F5B(MJ Left) - End Span Erection - Hanging Segments													
1032-2740	P40/F5B(MJ Left) - End Span Erection - Erect Segments	1	23-Aug-17	23-Aug-17	P40/F5B(MJ Left) - End Span Erection - Erect Segments													
1032-2760	P40/F5B(MJ Left) - End Span Erection - Stitching	2	24-Aug-17	25-Aug-17	P40/F5B(MJ Left) - End Span Erection - Stitching													
1032-2780	P40/F5B(MJ Left) - End Span Erection - Formwork Fixing for and Grouting for Bearing	2	24-Aug-17	25-Aug-17	P40/F5B(MJ Left) - End Span Erection - Formwork Fixing for and Grouting for Bearing													
1032-2800	P40/F5B(MJ Left) - End Span Erection - Prestress Span Tendons	2	26-Aug-17	28-Aug-17	P40/F5B(MJ Left) - End Span Erection - Prestress Span Tendons													
1032-2820	P40/F5B(MJ Left) - End Span Erection - Remove Hanger Bar & Hanger Beam & Stitching Formwork	1	29-Aug-17	29-Aug-17	P40/F5B(MJ Left) - End Span Erection - Remove Hanger Bar & Hanger Beam & Stitching Formwork													

Remaining Level of Effort	Remaining Work
Actual Level of Effort	Critical Remaining Work
Actual Work	Milestone

Contract HY/2009/19
Three Months Rolling Programme (20.July.2017 to 19.Oct.2017)

Activity ID	Activity Name	Rem Dur	Start	Finish	2017															
					August						September				October					
					16	23	30	06	13	20	27	03	10	17	24	01	08	15	22	
1061-4120	Pre Bored H-Pile > Pile Ramp - BN01 B - (H-Pile + Grouting)	1	20-Jul-17	20-Jul-17	■ Pre Bored H-Pile > Pile Ramp - BN01 B - (H-Pile + Grouting)															
1061-4240	Pre Bored H-Pile > Pile Ramp - BN06 A - (H-Pile + Grouting)	1	20-Jul-17	20-Jul-17	■ Pre Bored H-Pile > Pile Ramp - BN06 A - (H-Pile + Grouting)															
Excavation & ELS Works																				
1061-5200	Ch 5234 - 5285 > Excav from 2.5mPD to 1m Below 2nd Layer of Struts	10	11-Jul-17 A	31-Jul-17	■ Ch 5234 - 5285 > Excav from 2.5mPD to 1m Below 2nd Layer of Struts															
1061-5220	Ch 5234 - 5285 > Install 2nd Layer of Strut & Waling	10	01-Aug-17	11-Aug-17	■ Ch 5234 - 5285 > Install 2nd Layer of Strut & Waling															
1061-5240	Ch 5234 - 5285 > Excav to FEL	12	12-Aug-17	25-Aug-17	■ Ch 5234 - 5285 > Excav to FEL															
Structure Works																				
1061-5280	Bay 1 - Ch 5322 - 5331 > Base Slab - Water Proofing Membrane	2	25-Jul-17	26-Jul-17	■ Bay 1 - Ch 5322 - 5331 > Base Slab - Water Proofing Membrane															
1061-5300	Bay 1 - Ch 5322 - 5331 > Base Slab - Rebar Fixing	5	27-Jul-17	01-Aug-17	■ Bay 1 - Ch 5322 - 5331 > Base Slab - Rebar Fixing															
1061-5320	Bay 1 - Ch 5322 - 5331 > Base Slab - Erect Formworks	4	02-Aug-17	05-Aug-17	■ Bay 1 - Ch 5322 - 5331 > Base Slab - Erect Formworks															
1061-5340	Bay 1 - Ch 5322 - 5331 > Base Slab - Concreting	1	07-Aug-17	07-Aug-17	■ Bay 1 - Ch 5322 - 5331 > Base Slab - Concreting															
1061-5380	Bay 2 - Ch 5313 - 5322 > Base Slab - Water Proofing Membrane	2	08-Aug-17	09-Aug-17	■ Bay 2 - Ch 5313 - 5322 > Base Slab - Water Proofing Membrane															
1061-5400	Bay 2 - Ch 5313 - 5322 > Base Slab - Rebar Fixing	5	10-Aug-17	15-Aug-17	■ Bay 2 - Ch 5313 - 5322 > Base Slab - Rebar Fixing															
1061-5420	Bay 2 - Ch 5313 - 5322 > Base Slab - Erect Formworks	4	16-Aug-17	19-Aug-17	■ Bay 2 - Ch 5313 - 5322 > Base Slab - Erect Formworks															
1061-5440	Bay 2 - Ch 5313 - 5322 > Base Slab - Concreting	1	21-Aug-17	21-Aug-17	■ Bay 2 - Ch 5313 - 5322 > Base Slab - Concreting															
1061-5480	Bay 3 - Ch 5303 - 5313 > Base Slab - Water Proofing Membrane	2	22-Aug-17	23-Aug-17	■ Bay 3 - Ch 5303 - 5313 > Base Slab - Water Proofing Membrane															
1061-5500	Bay 3 - Ch 5303 - 5313 > Base Slab - Rebar Fixing	5	24-Aug-17	29-Aug-17	■ Bay 3 - Ch 5303 - 5313 > Base Slab - Rebar Fixing															
1061-5520	Bay 3 - Ch 5303 - 5313 > Base Slab - Erect Formworks	4	30-Aug-17	02-Sep-17	■ Bay 3 - Ch 5303 - 5313 > Base Slab - Erect Formworks															
1061-5540	Bay 3 - Ch 5303 - 5313 > Base Slab - Concreting	1	04-Sep-17	04-Sep-17	■ Bay 3 - Ch 5303 - 5313 > Base Slab - Concreting															
1061-5560	Bay 6 - Ch 5262 - 5277 > Base Slab - Blinding Layer	1	26-Aug-17	26-Aug-17	■ Bay 6 - Ch 5262 - 5277 > Base Slab - Blinding Layer															
1061-5580	Bay 6 - Ch 5262 - 5277 > Base Slab - Water Proofing Membrane	2	28-Aug-17	29-Aug-17	■ Bay 6 - Ch 5262 - 5277 > Base Slab - Water Proofing Membrane															
1061-5600	Bay 6 - Ch 5262 - 5277 > Base Slab - Rebar Fixing	6	30-Aug-17	05-Sep-17	■ Bay 6 - Ch 5262 - 5277 > Base Slab - Rebar Fixing															
1061-5620	Bay 6 - Ch 5262 - 5277 > Base Slab - Erect Formworks	4	06-Sep-17	09-Sep-17	■ Bay 6 - Ch 5262 - 5277 > Base Slab - Erect Formworks															
1061-5640	Bay 6 - Ch 5262 - 5277 > Base Slab - Concreting	1	11-Sep-17	11-Sep-17	■ Bay 6 - Ch 5262 - 5277 > Base Slab - Concreting															
1061-5660	Bay 5 - Ch 5277 - 5292 > Base Slab - Blinding Layer (WF1)	1	12-Sep-17	12-Sep-17	■ Bay 5 - Ch 5277 - 5292 > Base Slab - Blinding Layer (WF1)															
1061-5680	Bay 5 - Ch 5277 - 5292 > Base Slab - Base Slab - Water Proofing Membrane	3	13-Sep-17	15-Sep-17	■ Bay 5 - Ch 5277 - 5292 > Base Slab - Base Slab - Water Proofing Membrane															
1061-5700	Bay 5 - Ch 5277 - 5292 > Base Slab - Rebar Fixing (WF1)	6	16-Sep-17	22-Sep-17	■ Bay 5 - Ch 5277 - 5292 > Base Slab - Rebar Fixing (WF1)															
1061-5720	Bay 5 - Ch 5277 - 5292 > Base Slab - Erect Formworks (WF1)	3	23-Sep-17	26-Sep-17	■ Bay 5 - Ch 5277 - 5292 > Base Slab - Erect Formworks (WF1)															
1061-5740	Bay 5 - Ch 5277 - 5292 > Base Slab - Concreting (WF1)	1	27-Sep-17	27-Sep-17	■ Bay 5 - Ch 5277 - 5292 > Base Slab - Concreting (WF1)															
1061-5760	Bay 4 - Ch 5292 - 5303 > Base Slab - Blinding Layer (WF1)	1	28-Sep-17	28-Sep-17	■ Bay 4 - Ch 5292 - 5303 > Base Slab - Blinding Layer (WF1)															
1061-5780	Bay 4 - Ch 5292 - 5303 > Base Slab - Base Slab - Water Proofing Membrane	3	29-Sep-17	03-Oct-17	■ Bay 4 - Ch 5292 - 5303 > Base Slab - Base Slab - Water Proofing Membrane															
1061-5800	Bay 4 - Ch 5292 - 5303 > Base Slab - Rebar Fixing (WF1)	5	04-Oct-17	10-Oct-17	■ Bay 4 - Ch 5292 - 5303 > Base Slab - Rebar Fixing (WF1)															
1061-5820	Bay 4 - Ch 5292 - 5303 > Base Slab - Erect Formworks (WF1)	3	11-Oct-17	13-Oct-17	■ Bay 4 - Ch 5292 - 5303 > Base Slab - Erect Formworks (WF1)															
1061-5840	Bay 4 - Ch 5292 - 5303 > Base Slab - Concreting (WF1)	1	14-Oct-17	14-Oct-17	■ Bay 4 - Ch 5292 - 5303 > Base Slab - Concreting (WF1)															
1061-5860	Bay 7 - Ch 5247 - 5262 > Base Slab - Blinding Layer (WF2)	1	12-Sep-17	12-Sep-17	■ Bay 7 - Ch 5247 - 5262 > Base Slab - Blinding Layer (WF2)															
1061-5880	Bay 7 - Ch 5247 - 5262 > Base Slab - Base Slab - Water Proofing Membrane	3	13-Sep-17	15-Sep-17	■ Bay 7 - Ch 5247 - 5262 > Base Slab - Base Slab - Water Proofing Membrane															
1061-5900	Bay 7 - Ch 5247 - 5262 > Base Slab - Rebar Fixing (WF2)	6	16-Sep-17	22-Sep-17	■ Bay 7 - Ch 5247 - 5262 > Base Slab - Rebar Fixing (WF2)															
1061-5920	Bay 7 - Ch 5247 - 5262 > Base Slab - Erect Formworks (WF2)	3	23-Sep-17	26-Sep-17	■ Bay 7 - Ch 5247 - 5262 > Base Slab - Erect Formworks (WF2)															

■ Remaining Level of Effort ■ Remaining Work
■ Actual Level of Effort ■ Critical Remaining Work
■ Actual Work ◆ ◆ Milestone

Contract HY/2009/19
Three Months Rolling Programme (20.July.2017 to 19.Oct.2017)

Activity ID	Activity Name	Original Duration	Start	Finish	2017											
					May			Jun			Jul			Aug		
Total		1791d	21-Mar-13 A	10-Mar-18												
DWP-07 - (6) - Update Progress As of 20 May 17		1791d	21-Mar-13 A	10-Mar-18												
Works in KD2		93d	06-Mar-17 A	04-Jul-17												
Works in TS3-East		93d	06-Mar-17 A	04-Jul-17												
Removal of Temporary Reclamation at TS3(E)		93d	06-Mar-17 A	04-Jul-17												
TS3E Remaining Works & TS3E/TS3W, TS3E/TS2 Stitching Works		93d	06-Mar-17 A	04-Jul-17												
West Bound Tunnel (W/B)		41d	21-May-17	30-Jun-17												
Outstanding Reinforced Concrete Works		41d	21-May-17	30-Jun-17												
A6580	Joint Site Walk	5d	21-May-17	25-May-17	Joint Site Walk											
A6590	Handover Date	1d	30-Jun-17	30-Jun-17	Handover Date											
Stitching of TS2 & TS3E (5.0 m Tunnel Length for Base Slab, Roof Slab, Approx. 15 m length for OHVD)		40d	21-May-17	29-Jun-17												
A6650	TS2/TS3E OHVD (Hindrance: Falsework Erection and Rebar Lifting) - 10 days	23d	21-May-17	12-Jun-17	TS2/TS3E OHVD (Hindrance: Falsework Erection and Rebar Lifting) - 10 days											
A6660	Falsework Removal for OHVD - 7 days	7d	23-Jun-17	29-Jun-17	Falsework Removal for OHVD - 7 days											
Profile Barrier and Maintenance Walkway		8d	21-May-17	28-May-17												
A6700	Install Precast Concrete Covers on Cable Trough (2 X 90m)	8d	21-May-17	28-May-17	Install Precast Concrete Covers on Cable Trough (2 X 90m)											
East Bound Tunnel (E/B)		93d	06-Mar-17 A	04-Jul-17												
Outstanding Reinforced Concrete Works		93d	06-Mar-17 A	04-Jul-17												
A6960	Joint Site Walk	5d	29-Jun-17	03-Jul-17	Joint Site Walk											
A6970	Handover Date	1d	04-Jul-17	04-Jul-17	Handover Date											
Stitching of TS2 & TS3E (5.0 m Length for Base Slab, Roof Slab, Approx. 15 m length for OHVD)		87d	06-Mar-17 A	28-Jun-17												
A6860	TS2/TS3E OHVD (Hindrance: Falsework Erection and Rebar Lifting) - 10 days	10d	06-Mar-17 A	11-Jun-17	TS2/TS3E OHVD (Hindrance: Falsework Erection and Rebar Lifting) - 10 days											
A6870	Falsework Removal for OHVD - 7 days	7d	22-Jun-17	28-Jun-17	Falsework Removal for OHVD - 7 days											
Works in KD7		81d	23-Mar-17 A	19-Jun-17												
Works in TS3-West		81d	23-Mar-17 A	19-Jun-17												
Tunnel Structure		81d	23-Mar-17 A	19-Jun-17												
Skin Wall Removal Works between TS4/TS3W and Shaft D Closure		81d	23-Mar-17 A	19-Jun-17												
A2590	Skin Wall Removal Works between TS4/TS3W - 20 days (2nd stage) - After Tunnel Roof Slab Completion - E/B and W/B	20d	23-Mar-17 A	30-May-17 A	Skin Wall Removal Works between TS4/TS3W - 20 days (2nd stage) - After Tunnel Roof Slab Completion - E/B and W/B											
A2600	Construction of Remaining Tunnel Structure between CH. 4260.2- 4265.2 at SOL T100 for Mainline E/B, W/B, SR8	30d	10-May-17 A	19-Jun-17	Construction of Remaining Tunnel Structure between CH. 4260.2- 4265.2 at SOL T100 for Mainline E/B, W/B, SR8											
Works in KD8		127d	31-Mar-17 A	24-Aug-17												
TS3W - Remove Temporary Reclamation		127d	31-Mar-17 A	24-Aug-17												
Stage 3 - North to East Side (Bay 19 to bay 26)		16d	14-Apr-17 A	29-Apr-17 A												
North West D-wall Opening		16d	14-Apr-17 A	29-Apr-17 A												
A2730	Vertical cut at Panel DW02 to NA6 (19 nos.)	8d	14-Apr-17 A	20-Apr-17 A	NA6 (19 nos.)											
A2740	Horizontal cut at Panel DW02 to NA6 (25 nos.)	8d	21-Apr-17 A	29-Apr-17 A	cut at Panel DW02 to NA6 (25 nos.)											
Stage 4 - West & South Side (Remove Seawall Block Bay Z4-23 & 24, Excavate to -4.35mPD)		76d	31-Mar-17 A	15-Jun-17												
West Side		49d	31-Mar-17 A	22-May-17 A												
A2790	Remove seawall blocks at Bay Bay Z4-23 to Z4-24 (249 nos.)	5d	31-Mar-17 A	15-May-17 A	Remove seawall blocks at Bay Bay Z4-23 to Z4-24 (249 nos.)											
A2800	Remove filled material to -7.0mPD (West)	5d	22-Apr-17 A	22-May-17 A	Remove filled material to -7.0mPD (West)											
North East Side		48d	19-Apr-17 A	31-May-17 A												
A2810	Core D-wall cut holes at Panel W1D1 to W1D32 (128 nos.) (North Side)	14d	19-Apr-17 A	26-Apr-17 A	holes at Panel W1D1 to W1D32 (128 nos.) (North Side)											
A2820	Vertical cut at Panel W1D1 to W1D32 (96 nos.) (North Side)	16d	27-Apr-17 A	17-May-17 A	Vertical cut at Panel W1D1 to W1D32 (96 nos.) (North Side)											
A2830	Horizontal cut at Panel W1D1 to W1D32 (128 nos.) (North Side)	20d	06-May-17 A	31-May-17 A	Horizontal cut at Panel W1D1 to W1D32 (128 nos.) (North Side)											
East Side		64d	20-Apr-17 A	31-May-17 A												

- Actual Work
- Remaining Work
- Critical Remaining Work
- ◆ Milestone

Date	Revision	Checked	Approved
20-May-17	DWP-07 (6) - 3 Months Rolling	FS	TL

Activity ID	Activity Name	Original Duration	Start	Finish	2017			
					May	Jun	Jul	Aug
A2840	Core D-wall cut holes at Panel TZ31 to TZ38 (32 nos.) (East Side)	10d	20-Apr-17 A	26-Apr-17 A	Core D-wall cut holes at Panel TZ31 to TZ38 (32 nos.) (East Side)			
A2850	Vertical cut at Panel TZ31 to TZ38 (24 nos.) (East Side)	9d	11-May-17 A	24-May-17 A	Vertical cut at Panel TZ31 to TZ38 (24 nos.) (East Side)			
A2860	Horizontal cut at Panel TZ31 to TZ38 (32 nos.) (East Side)	10d	23-May-17 A	31-May-17 A	Horizontal cut at Panel TZ31 to TZ38 (32 nos.) (East Side)			
South Side		30d	12-May-17 A	15-Jun-17				
A2870	Remove filled material to -4.35mPD (41,300m3)	30d	12-May-17 A	15-Jun-17	Remove filled material to -4.35mPD (41,300m3)			
Stage 5 - West & South side (Reeve Seawall Block Bay 24 7 25, Excavate to -7.0mPD)		44d	26-Apr-17 A	03-Jul-17				
A2920	Vertical cut at Panel BWD2 to BWD9 (22 nos.) (West Side)	8d	26-Apr-17 A	02-May-17 A	Vertical cut at Panel BWD2 to BWD9 (22 nos.) (West Side)			
A2930	Horizontal cut at Panel BWD2 to BWD9 (29 nos.) (West Side)	8d	06-May-17 A	21-May-17 A	Horizontal cut at Panel BWD2 to BWD9 (29 nos.) (West Side)			
A2880	Remove seawall blocks at Bay 24, 25 (264 nos.) (South West)	6d	21-May-17 A	21-Jun-17	Remove seawall blocks at Bay 24, 25 (264 nos.) (South West)			
A2890	Remove seawall blocks at Bay 2 to 4 (550 nos.) (South East)	11d	16-Jun-17	26-Jun-17	Remove seawall blocks at Bay 2 to 4 (550 nos.) (South East)			
A2900	Remove filled material to -7.0mPD (South)	7d	27-Jun-17	03-Jul-17	Remove filled material to -7.0mPD (South)			
Stage 6 - West & South Side (Saw Cut D-wall + Shaft D)		70d	12-Apr-17 A	27-Jul-17				
A2950	Core D-wall cut holes at Panel W2D1 to W2D18 (72 nos.) (South West)	9d	12-Apr-17 A	04-Jul-17	Core D-wall cut holes at Panel W2D1 to W2D18 (72 nos.) (South West)			
A2940	Remove fill material to -7.0mPD around shaft D	5d	23-Apr-17 A	26-Apr-17 A	Remove fill material to -7.0mPD around shaft D			
A2960	Vertical cut at Panel W2D1 to W2D18 (54 nos.) (South West)	18d	26-Apr-17 A	04-Jul-17	Vertical cut at Panel W2D1 to W2D18 (54 nos.) (South West)			
A2970	Horizontal cut at Panel W2D1 to W2D18 (72 nos.) (South West)	18d	04-Jul-17	21-Jul-17	Horizontal cut at Panel W2D1 to W2D18 (72 nos.) (South West)			
A2980	Core D-wall cut holes at Panel W2D23 to W2D34 (50 nos.) (South East)	10d	04-Jul-17	13-Jul-17	Core D-wall cut holes at Panel W2D23 to W2D34 (50 nos.) (South East)			
A2990	Vertical cut at Panel W2D23 to W2D34 (38 nos.) (South East)	13d	08-Jul-17	20-Jul-17	Vertical cut at Panel W2D23 to W2D34 (38 nos.) (South East)			
A3000	Horizontal cut at Panel W2D23 to W2D34 (50 nos.) (South East)	13d	15-Jul-17	27-Jul-17	Horizontal cut at Panel W2D23 to W2D34 (50 nos.) (South East)			
Stage 7 - West & South Side (Saw Cut Shaft D, Excavate to -7.0mPD at SR8)		70d	26-Apr-17 A	03-Aug-17				
A3010	Vertical cut at Shaft D (14 nos.)	10d	26-Apr-17 A	30-Apr-17 A	Vertical cut at Shaft D (14 nos.)			
A3020	Horizontal cut at Shaft D (14 nos.)	5d	28-Apr-17 A	04-May-17 A	Horizontal cut at Shaft D (14 nos.)			
A3030	Remove filled material to -7.0mPD at SR8	7d	28-Jul-17	03-Aug-17	Remove filled material to -7.0mPD at SR8			
Stage 8 - South East & West Side (Remove Seawall Block Bay Z4-22 to Bay 23, Saw Cut D-wall at SR8)		96d	21-May-17	24-Aug-17				
South West Side		42d	21-May-17	01-Jul-17				
A3040	Remove seawall blocks at Bay Z4-22 to Bay 23 (741 nos.)	15d	21-May-17	04-Jun-17	Remove seawall blocks at Bay Z4-22 to Bay 23 (741 nos.)			
A3050	Remove filled material to -7.0mPD (South West)	8d	05-Jun-17	12-Jun-17	Remove filled material to -7.0mPD (South West)			
A3060	Vertical cut at Panel BWD10 to SA7 (26 nos.) (South West)	9d	13-Jun-17	21-Jun-17	Vertical cut at Panel BWD10 to SA7 (26 nos.) (South West)			
A3070	Horizontal cut at Panel BWD10 to SA7 (37 nos.) (South West)	10d	22-Jun-17	01-Jul-17	Horizontal cut at Panel BWD10 to SA7 (37 nos.) (South West)			
SR08 - West Wall		21d	04-Aug-17	24-Aug-17				
A3080	Vertical cut at Panel W4D1 to W4D11 (28 nos.) (SR8)	10d	04-Aug-17	13-Aug-17	Vertical cut at Panel W4D1 to W4D11 (28 nos.) (SR8)			
A3090	Horizontal cut at Panel W4D1 to W4D11 (39 nos.) (SR8)	11d	14-Aug-17	24-Aug-17	Horizontal cut at Panel W4D1 to W4D11 (39 nos.) (SR8)			
SR08 - East Wall		19d	04-Aug-17	22-Aug-17				
A7010	Vertical cut at Panel W4D1 to W4D11 (26 nos.)	9d	04-Aug-17	12-Aug-17	Vertical cut at Panel W4D1 to W4D11 (26 nos.)			
A7020	Horizontal cut at Panel W3D1 to W3D7 (36 nos.)	10d	13-Aug-17	22-Aug-17	Horizontal cut at Panel W3D1 to W3D7 (36 nos.)			
Works in KD6		225d	22-Jan-17 A	15-Jul-17				
Works in SR8 (Open Cut Method)		225d	22-Jan-17 A	15-Jul-17				
SR8 (Zone C) - Ch. 528 to Ch. 368		177d	23-Mar-17 A	05-Jun-17				
Zone C - Tunnel Structure		177d	23-Mar-17 A	05-Jun-17				
200mm Thick OHVD Slab & 400mm Thick Hanger Wall		9d	21-May-17	29-May-17				
Bay C6		9d	21-May-17	29-May-17				
A7570	C6 - Construct OHVD Slab & Hanger Wall	9d	21-May-17	29-May-17	C6 - Construct OHVD Slab & Hanger Wall			
1.2m Thick Roof Slab		9d	23-Mar-17 A	16-May-17 A				
Bay C6		9d	23-Mar-17 A	16-May-17 A				

Activity ID	Activity Name	Original Duration	Start	Finish	2017			
					May	Jun	Jul	Aug
A7630	C6 - Partial Roof + Up Stand Wall Construction for Access Shaft	9d	23-Mar-17 A	16-May-17 A	C6 - Partial Roof + Up Stand Wall Construction for Access Shaft			
Removal of Roof Falsework - 10 days Curing		4d	23-May-17 A	27-May-17 A				
A7680	C6 - Removal of Falsework of Roof slab	4d	23-May-17 A	27-May-17 A	C6 - Removal of Falsework of Roof slab			
Egress Passage - EP01		14d	06-Apr-17 A	24-Apr-17 A				
Bay C3		14d	06-Apr-17 A	24-Apr-17 A				
A8030	C3 - Dismantle Scaffolding of EP01 Roof Slab - 10 days Curing	14d	06-Apr-17 A	24-Apr-17 A	Dismantling of EP01 Roof Slab - 10 days Curing			
Bay C4		14d	06-Apr-17 A	24-Apr-17 A				
A8040	C4 - Dismantle Scaffolding of EP01 Roof Slab - 10 days Curing	14d	06-Apr-17 A	24-Apr-17 A	Dismantling of EP01 Roof Slab - 10 days Curing			
Utility Trough		16d	21-May-17	05-Jun-17				
Bay C1		16d	21-May-17	05-Jun-17				
A7790	RHS / C1 - Backing Concrete	4d	21-May-17	24-May-17	RHS / C1 - Backing Concrete			
A7800	RHS / C1 - Profile Barrier	4d	25-May-17	28-May-17	RHS / C1 - Profile Barrier			
A7770	LHS / C1 - Backing Concrete	4d	29-May-17	01-Jun-17	LHS / C1 - Backing Concrete			
A7780	LHS / C1 - Profile Barrier	4d	02-Jun-17	05-Jun-17	LHS / C1 - Profile Barrier			
Bay C2		16d	21-May-17	05-Jun-17				
A7830	RHS / C2 - Backing Concrete	4d	21-May-17	24-May-17	RHS / C2 - Backing Concrete			
A7840	RHS / C2 - Profile Barrier	4d	25-May-17	28-May-17	RHS / C2 - Profile Barrier			
A7810	LHS / C2 - Backing Concrete	4d	29-May-17	01-Jun-17	LHS / C2 - Backing Concrete			
A7820	LHS / C2 - Profile Barrier	4d	02-Jun-17	05-Jun-17	LHS / C2 - Profile Barrier			
Bay C3		16d	21-May-17	05-Jun-17				
A7870	RHS / C3 - Backing Concrete	4d	21-May-17	24-May-17	RHS / C3 - Backing Concrete			
A7880	RHS / C3 - Profile Barrier	4d	25-May-17	28-May-17	RHS / C3 - Profile Barrier			
A7850	LHS / C3 - Backing Concrete	4d	29-May-17	01-Jun-17	LHS / C3 - Backing Concrete			
A7860	LHS / C3 - Profile Barrier	4d	02-Jun-17	05-Jun-17	LHS / C3 - Profile Barrier			
Bay C4		16d	21-May-17	05-Jun-17				
A7910	RHS / C4 - Backing Concrete	4d	21-May-17	24-May-17	RHS / C4 - Backing Concrete			
A7920	RHS / C4 - Profile Barrier	4d	25-May-17	28-May-17	RHS / C4 - Profile Barrier			
A7890	LHS / C4 - Backing Concrete	4d	29-May-17	01-Jun-17	LHS / C4 - Backing Concrete			
A7900	LHS / C4 - Profile Barrier	4d	02-Jun-17	05-Jun-17	LHS / C4 - Profile Barrier			
Bay C5		16d	21-May-17	05-Jun-17				
A7950	RHS / C5 - Backing Concrete	4d	21-May-17	24-May-17	RHS / C5 - Backing Concrete			
A7960	RHS / C5 - Profile Barrier	4d	25-May-17	28-May-17	RHS / C5 - Profile Barrier			
A7930	LHS / C5 - Backing Concrete	4d	29-May-17	01-Jun-17	LHS / C5 - Backing Concrete			
A7940	LHS / C5 - Profile Barrier	4d	02-Jun-17	05-Jun-17	LHS / C5 - Profile Barrier			
SR8 (Zone B) - Ch.385.000 to Ch.317.500 - (Inside Victoria Park to Tunnel Portal)		56d	09-May-17 A	15-Jul-17				
SR8 (Zone B) Tunnel - ELS / CCT / BF Works (7 Bays Ch. 385.000 to Ch.317.500)		56d	09-May-17 A	15-Jul-17				
Portal Structure		56d	09-May-17 A	15-Jul-17				
OHVD		23d	09-May-17 A	12-Jun-17				
Bay B1 + B2 (CH338.625 to CH368)		23d	09-May-17 A	12-Jun-17				
SR8_ZB_1390	Zone B - OHVD - Erect Scaffolding & Soffit Formwork	6d	09-May-17 A	15-May-17 A	Zone B - OHVD - Erect Scaffolding & Soffit Formwork			
SR8_ZB_1400	Zone B - Redrill & Install Rebar on Soffit of Roof Slab	10d	16-May-17 A	25-May-17 A	Zone B - Redrill & Install Rebar on Soffit of Roof Slab			
SR8_ZB_1440	Zone B - OHVD Place Concrete to OHVD Slab & Wall	1d	24-May-17	24-May-17	Zone B - OHVD Place Concrete to OHVD Slab & Wall			
SR8_ZB_1450	Zone B - OHVD Curing Period for OHVD Slab	10d	25-May-17	06-Jun-17	Zone B - OHVD Curing Period for OHVD Slab			
SR8_ZB_1420	Zone B - OHVD - Rebar Fixing for Slab & Hanger Wall of OHVD	4d	26-May-17 A	30-May-17 A	Zone B - OHVD - Rebar Fixing for Slab & Hanger Wall of OHVD			

- Actual Work
- Remaining Work
- Critical Remaining Work
- ◆ Milestone

Date	Revision	Checked	Approved
20-May-17	DWP-07 (6) - 3 Months Rolling	FS	TL

Activity ID	Activity Name	Original Duration	Start	Finish	2017			
					May	Jun	Jul	Aug
SR8_ZB_1430	Zone B - OHVD Erect Hanger Wall Formwork for OHVD	2d	31-May-17 A	23-May-17				
SR8_ZB_1460	Zone B - OHVD Remove Soffit Formwork & Scaffolding	5d	07-Jun-17	12-Jun-17				
Utility Trough		28d	13-Jun-17	15-Jul-17				
Left Hand Side		21d	21-Jun-17	15-Jul-17				
SR8_ZB_1570	Zone B - U trough (LHS) Bay 3	7d	21-Jun-17	28-Jun-17				
SR8_ZB_1560	Zone B - U trough (LHS) Bay 2	7d	29-Jun-17	07-Jul-17				
SR8_ZB_1550	Zone B - U trough (LHS) Bay 1	7d	08-Jul-17	15-Jul-17				
Right Hand Side		21d	13-Jun-17	07-Jul-17				
SR8_ZB_1600	Zone B - U trough (RHS) Bay 3	7d	13-Jun-17	20-Jun-17				
SR8_ZB_1590	Zone B - U trough (RHS) Bay 2	7d	21-Jun-17	28-Jun-17				
SR8_ZB_1580	Zone B - U trough (RHS) Bay 1	7d	29-Jun-17	07-Jul-17				
Pump House		52d	21-May-17	11-Jul-17				
Remining Works inside Pump Sump E		52d	21-May-17	11-Jul-17				
SR8_ZB_1890	Steel Works Installation inside Pump Sump E	45d	21-May-17	04-Jul-17				
SR8_ZB_1900	Installation Manhole Covers for Pump Sump E	7d	05-Jul-17	11-Jul-17				
SR8 (Zone A) - Ch 317.500 to Ch 210.000 - U-Structure & Slab (Victoria Park)		28d	22-Jan-17 A	26-Jun-17				
RC CCT & Backfill Ch317.5000 to Ch240.000		28d	22-Jan-17 A	26-Jun-17				
Structure		28d	22-Jan-17 A	26-Jun-17				
Utility Through		28d	22-Jan-17 A	26-Jun-17				
SR8_ZA_1260	Zone A - Utility Trough for Zone A (CH240 to CH317)	28d	22-Jan-17 A	26-Jun-17				
Works in KD9 (Include Re-provisioning Works of KD4,KD5)		330d	12-Dec-16 A	12-Oct-17				
External Works Under KD9		330d	12-Dec-16 A	12-Oct-17				
Tsing Fung St - RW & Subway Extension & Toe Wall at Hing Fat St		172d	01-Mar-17 A	07-Sep-17				
Retaining Wall + Toe Wall at Hing Fat Street		172d	01-Mar-17 A	07-Sep-17				
Retaining Wall RW8D		58d	01-Mar-17 A	02-Jun-17				
Works along RW8D During Reopen Hing Fat Street Footpath to Public		58d	01-Mar-17 A	02-Jun-17				
A4910	Close slow lane of HFS to cut coping of RW8D and subway	20d	01-Mar-17 A	26-Apr-17 A				
A4920	Lay temp bituminous pavement for road diversion (from RW8D to Subway)	3d	22-May-17	24-May-17				
A4940	Install steel vehicle parapet on RW8C, subway and RW8D	10d	22-May-17	02-Jun-17				
Retaining Walls RW8E, Sign Footings & Sewer Pipe (SK266G, SK539C, SK375B)		127d	19-Apr-17 A	07-Sep-17				
A4620	Excavate and lay blinding layer of RW8E (Including ELS)	14d	19-Apr-17 A	15-May-17 A				
A4650	MH2-70 to MH2-71 (150 dia. foul sewer pipe)	12d	02-May-17 A	13-May-17 A				
A4670	MH2-72 to MH2-73	12d	15-May-17 A	27-May-17 A				
A4630	Construction of RW8E and toe wall (2+1 bays, 32m long)	45d	16-May-17 A	27-Jun-17				
A4880	DS16 - Sign Frame Installation	14d	21-May-17	03-Jun-17				
A4640	Backfill and subsoil drainage system behind RW8E	14d	28-Jun-17	14-Jul-17				
A4680	MH 2-73 to Extg MH (on footpath)	12d	15-Jul-17	28-Jul-17				
A4690	OHVD and 5m CCTV high mast footing on footpath	14d	29-Jul-17	14-Aug-17				
A4900	TCSS Drawpit and ducts	21d	15-Aug-17	07-Sep-17				
Storm Drain Pipe behind RW8C along Tsing Fung Street (SK547A)		28d	15-May-17 A	23-Jun-17				
A4540	Modified MH shaft A2 at extg box culvert near MH TFS-04A	14d	15-May-17 A	30-May-17 A				
A6410	MHTFS-06 to extg MH A3 (at slow lane of TFS)	14d	22-May-17	07-Jun-17				
A8050	MHTFS-05 to extg MH A3 (gully)	14d	08-Jun-17	23-Jun-17				
Sign Footings at Victoria Park		75d	22-May-17	18-Aug-17				

Activity ID	Activity Name	Original Duration	Start	Finish	2017			
					May	Jun	Jul	Aug
A4570	Construction of 5m CCTV, AID, OHVD, TSG, luminance meter at verge inside VP	60d	22-May-17*	01-Aug-17				Construction of 5m CCTV, AID, OHVD, TSG,
A4580	All drawpits (ATC, E&M and lighting) and ductings at verge inside VP (SK375B)	60d	09-Jun-17	18-Aug-17				All drawpits (
Boundary Fence, Type 2 Railing Footings & Fence Wall From RW8C to Zone B		267d	12-Dec-16 A	12-Oct-17				
A8070	Fence wall between BGO and Zone A (78.2m)	90d	12-Dec-16 A	01-Aug-17				Fence wall between BGO and Zone A (78.2m)
A4700	Construction of boundary fence from RW8C toe wall to 15m CCTV high mast (approx. 53m)	50d	19-Dec-16 A	20-Jun-17				Construction of boundary fence from RW8C toe wall to 15m CCTV high mast (approx. 53m)
A4710	Modification/ Re-construction of extg type 2 railing footing in front of RW8C (approx. 40m)	60d	10-Feb-17 A	30-Aug-17				
A4720	Construction of boundary fence from 15m CCTV high mast to Zone A at CH210 (approx. 50m)	50d	21-Jun-17	18-Aug-17				Construction
A4730	Construction of boundary fence near nursery compound (approx. 167m, after completion of MH 2-73)	90d	27-Jun-17	12-Oct-17				
Other Storm, Sewerage Pipe & Irrigation System in VP (SK336E, SK539D)		170d	21-Feb-17 A	05-Sep-17				
A4770	MH2-71 to TFS-06 via MH2-72 and MH 2-73 (300 dia. concrete pipe)	40d	21-Feb-17 A	26-Jun-17				MH2-71 to TFS-06 via MH2-72 and MH 2-73 (300 dia. concrete pipe)
A4740	FMH-B01 to Extg 1-40 (5 MHs and 7 foul sewer PE pipeline)	90d	22-May-17	05-Sep-17				
A4970	Irrigation Main Laying	14d	27-Jun-17	10-Jul-17				Irrigation Main Laying
A4760	MHB (beside pump sump E) to MH2-70 (300 dia. stormwater pipeline)	14d	27-Jun-17	13-Jul-17				MHB (beside pump sump E) to MH2-70 (300 dia. stormwater pipeline)
A4980	Water Points Installation	14d	11-Jul-17	24-Jul-17				Water Points Installation
Preparation Works before Implementation TTA at Central Median		172d	02-Feb-17 A	20-Aug-17				
A4795	Excavate to formation level and lay subbase, fix K1 kerb along TFS	14d	02-Feb-17 A	05-Jun-17				Excavate to formation level and lay subbase, fix K1 kerb along TFS
A4890	Laying Ducting Cross Access Ramp Down to Zone C SR8 Tunnel	60d	21-May-17	19-Jul-17				Laying Ducting Cross Access Ramp Down to Zone C SR8 Tunnel
A4930	Shifting Site Entrance 6A	4d	20-Jul-17	23-Jul-17				Shifting Site Entrance 6A
A4950	Laying Ducting in New SR8 Approaching Island	14d	24-Jul-17	06-Aug-17				Laying Ducting in New SR8 Approach
A5020	Forming Island Including Sub-base & Kerbing	14d	07-Aug-17	20-Aug-17				Forming
Reverting Traffic for IEC, VP Rd & TF St & Seawall Reinstatement (KD9)		109d	27-Mar-17 A	27-Aug-17				
TTA Revert Traffic Back to Original Alignment		109d	27-Mar-17 A	27-Aug-17				
Preparation Works - Backfill of Zone C to Top of Tunnel Structure		56d	27-Mar-17 A	10-Jun-17				
A5790	Waterproofing & Screeding to Roof	4d	27-Mar-17 A	22-May-17 A				Waterproofing & Screeding to Roof
A5800	Load Transfer for King Post	6d	05-Apr-17 A	25-May-17 A				Load Transfer for King Post
A5820	Zone C - Bay C1 to C5 Backfill to Formation & Remove Struts SL1 to SL3 (Up to +2.5mPD)	44d	10-Apr-17 A	10-Jun-17				Zone C - Bay C1 to C5 Backfill to Formation & Remove Struts SL1 to SL3 (Up to +2.5mPD)
A5780	Curing to Roof Slab of Zone C	3d	17-May-17 A	19-May-17 A				Curing to Roof Slab of Zone C
A5810	Make Good Box-out Left by King Post	2d	26-May-17 A	27-May-17 A				Make Good Box-out Left by King Post
East Bound TTA - IEC East Bound, Victoria Park Road & Footpath along Sea Side		78d	11-Jun-17	27-Aug-17				
Stage 1 - IEC (East Bound)		36d	11-Jun-17	16-Jul-17				
A5240	IEC/EB - Construct Footing of Sign Gantry & Wing Wall	17d	11-Jun-17	27-Jun-17				IEC/EB - Construct Footing of Sign Gantry & Wing Wall
A5260	IEC/EB - Backfill to Formation Level (Approx. 2.2mPD to +3.9mPD)	5d	11-Jun-17	15-Jun-17				IEC/EB - Backfill to Formation Level (Approx. 2.2mPD to +3.9mPD)
A5270	IEC/EB - Reconstruct Wing Wall of Abutment M (approx. 6m)	10d	11-Jun-17	20-Jun-17				IEC/EB - Reconstruct Wing Wall of Abutment M (approx. 6m)
A5280	IEC/EB - Cast Central Median	21d	11-Jun-17	01-Jul-17				IEC/EB - Cast Central Median
A5310	IEC/EB - Remove Temporary Utilities Supports at IEC	3d	11-Jun-17	13-Jun-17				IEC/EB - Remove Temporary Utilities Supports at IEC
A3285	IEC/EB - Cut and Remove Pipe Pile (2m Below Ground Level)	7d	11-Jun-17	17-Jun-17				IEC/EB - Cut and Remove Pipe Pile (2m Below Ground Level)
A5320	IEC/EB - Reinstale Existing Drainage System	14d	14-Jun-17	27-Jun-17				IEC/EB - Reinstale Existing Drainage System
A3286	IEC/EB - Cut and Remove Sheet Pile (2m Below Ground Level)	7d	18-Jun-17	24-Jun-17				IEC/EB - Cut and Remove Sheet Pile (2m Below Ground Level)
A5290	IEC/EB - Street Lighting Cable Duct & Poles	3d	25-Jun-17	27-Jun-17				IEC/EB - Street Lighting Cable Duct & Poles
A5250	IEC/EB - Install A Frame of Sign Gantry	4d	28-Jun-17	01-Jul-17				IEC/EB - Install A Frame of Sign Gantry
A5300	IEC/EB - TOC of Street Lightings	2d	28-Jun-17	29-Jun-17				IEC/EB - TOC of Street Lightings
A5330	IEC/EB - Backfill Drainage Trench Up to Formation (+2.5mPd to +3.9mPD)	5d	28-Jun-17	02-Jul-17				IEC/EB - Backfill Drainage Trench Up to Formation (+2.5mPd to +3.9mPD)
A5340	IEC/EB - Laying Sub-base	2d	03-Jul-17	04-Jul-17				IEC/EB - Laying Sub-base
A5350	IEC/EB - Laying Asphalt Pavement	3d	05-Jul-17	07-Jul-17				IEC/EB - Laying Asphalt Pavement

Activity ID	Activity Name	Original Duration	Start	Finish	2017			
					May	Jun	Jul	Aug
A5360	IEC/EB - Road Mark & Traffic Signs	3d	08-Jul-17	10-Jul-17			■ IEC/EB - Road Mark & Traffic Signs	
A5370	IEC/EB - Implement TTA to Divert Traffic to IEC East Bound	1d	16-Jul-17	16-Jul-17			■ IEC/EB - Implement TTA to Divert Traffic to IEC East Bound	
Stage 2 - Vitoria Park Road		35d	24-Jul-17	27-Aug-17				
A5380	VP Road - Remove Ligth Weight Concrete Ramp	21d	24-Jul-17	13-Aug-17			■ VP Road - Remove Lig	
A5390	VP Road - Reinstate Pararpet Wall of IEC Bridge	35d	24-Jul-17	27-Aug-17			■ VP Road - Reinstate Pararpet Wall of IEC Bridge	
A5400	VP Road - Traffic Deck & Footing Removal	14d	24-Jul-17	06-Aug-17			■ VP Road - Traffic Deck; & Footing R	
A5410	VP Road - Cut Pipe Piles	7d	07-Aug-17	13-Aug-17			■ VP Road - Cut Pipe Pili	
A5420	VP Road - Cut Sheet Piles	7d	14-Aug-17	20-Aug-17			■ VP Road	
West Bound - IEC West Bound & Tsing Fung Street		78d	11-Jun-17	27-Aug-17				
Stage 1 - IEC (West Bound)		36d	11-Jun-17	16-Jul-17				
A5690	IEC/WB - Cut pipe pile - 1 week	7d	11-Jun-17	17-Jun-17	■ IEC/WB - Cut pipe pile - 1 week			
A5710	IEC/WB - Removal of pedestrian decking	11d	11-Jun-17	21-Jun-17	■ IEC/WB - Removal of pedestrian decking			
A3785	IEC/WB - Reconstruct Wing Wall of Abutment M (approx. 6m)	10d	11-Jun-17	20-Jun-17	■ IEC/WB - Reconstruct Wing Wall of Abutment M (approx. 6m)			
A5700	IEC/WB - Cut sheetpile - 1 week	7d	18-Jun-17	24-Jun-17	■ IEC/WB - Cut sheetpile - 1 week			
A5720	IEC/WB - Remove temporary utilities support 3 days	3d	22-Jun-17	24-Jun-17	■ IEC/WB - Remove temporary utilities support 3 days			
A5730	IEC/WB - Backfill up to Formation under Asphalt (from +2.5mPD to +3.9mPD) 5 days	5d	25-Jun-17	29-Jun-17	■ IEC/WB - Backfill up to Formation under Asphalt (from +2.5mPD to +3.9mPD) 5 days			
A5740	IEC/WB - Subbase Laying 2 days	2d	30-Jun-17	01-Jul-17	■ IEC/WB - Subbase Laying 2 days			
A5750	IEC/WB - Asphalt (Road Base, Base Course, Wearing Course) 5 days	5d	02-Jul-17	06-Jul-17	■ IEC/WB - Asphalt (Road Base, Base Course, Wearing Course) 5 days			
A5760	IEC/WB - Road Marking/Traffic Sign 3 days	3d	07-Jul-17	09-Jul-17	■ IEC/WB - Road Marking/Traffic Sign 3 days			
A5840	IEC/WB - Implement TTM	1d	16-Jul-17	16-Jul-17	■ IEC/WB - Implement TTM			
Stage 2 - Tsing Fung Street		42d	17-Jul-17	27-Aug-17				
A5850	Decking /Footing Removal - 2 weeks	14d	17-Jul-17	30-Jul-17			■ Decking /Footing Removal - 2 weeks	
A5880	Light Weight Conc. Ramp Rem. 4 weeks	28d	17-Jul-17	13-Aug-17			■ Light Weight Conc. Ra	
A5890	Trench Excavation for Towngas - 4 weeks	28d	17-Jul-17	13-Aug-17			■ Trench Excavation for	
A5860	Cut pipe pile - 1 week	7d	31-Jul-17	06-Aug-17			■ Cut pipe pile - 1 week	
A5870	Cut sheetpile - 1 week	7d	07-Aug-17	13-Aug-17			■ Cut sheetpile - 1 week	
A5900	Diversion of Towngas at TFS - 3 weeks	21d	07-Aug-17	27-Aug-17			■ Diversion of Towngas at TFS - 3 weeks	
A5910	Backfill up to Formation (from +2.5mPD to +3.9mPD) 5 days	5d	14-Aug-17	18-Aug-17			■ Backfill up to	
A5920	Installation of Cross Road Duct of street lighting - 3 days	3d	14-Aug-17	16-Aug-17			■ Installation of Cr	
A5930	K1 kerb installation - 1 week	7d	19-Aug-17	25-Aug-17			■ K1 kerb installation - 1 week	
Reinstatement Existing Slopping & Vertical Sea Wall		55d	11-Jun-17	04-Aug-17				
Major Reinstatement Works for Seawall Reinstatement		55d	11-Jun-17	04-Aug-17				
Stage 1 - Removal of Remaining Pipe Pile Wall, Sheet Pile Wall & D-wall		55d	11-Jun-17	04-Aug-17				
A7030	Backfill upto +2.5mPD at all bay of SR8	1d	11-Jun-17	11-Jun-17	■ Backfill upto +2.5mPD at all bay of SR8			
A7040	Cut pipe pile wall at A1 - A14	14d	12-Jun-17	25-Jun-17	■ Cut pipe pile wall at A1 - A14			
A7050	Under water cut sheet pile wall (36 nos.)	40d	26-Jun-17	04-Aug-17			■ Under water cut sheet pile wall (36 nos.)	
Works in Victoria Park (KD4, KD5, KD9)		184d	20-Jan-17 A	29-Aug-17				
Re-Provisioning Works		184d	20-Jan-17 A	29-Aug-17				
Nursery Compound		184d	20-Jan-17 A	29-Aug-17				
Submission		123d	20-Jan-17 A	26-Jun-17				
ABWF Submission		76d	03-Feb-17 A	10-May-17 A				
Material		21d	19-Apr-17 A	10-May-17 A				
VP_NC_1070	ABWF Material Delivery	21d	19-Apr-17 A	10-May-17 A	■ ABWF Material Delivery			
Shop Drawing		14d	03-Feb-17 A	03-May-17 A				

Activity ID	Activity Name	Original Duration	Start	Finish	2017			
					May	Jun	Jul	Aug
VP_NC_1090	ABWF Shop Drawing - ER Review and Approval	14d	03-Feb-17 A	03-May-17 A	ABWF Shop Drawing - ER Review and Approval			
E&M Submission		123d	20-Jan-17 A	26-Jun-17				
Material		123d	20-Jan-17 A	26-Jun-17				
VP_NC_1140	E&M Issue P.O. / Manufacturing / Fabrication	15d	20-Jan-17 A	21-May-17 A	E&M Issue P.O. / Manufacturing / Fabrication			
VP_NC_1150	E&M Materail Delivery	30d	22-May-17	26-Jun-17	E&M Materail Delivery			
Shop Drawing		30d	08-May-17 A	19-Jun-17				
VP_NC_1170	E&M Shop Drawing - ER Review and Approval	30d	08-May-17 A	19-Jun-17	E&M Shop Drawing - ER Review and Approval			
Nursery compound		60d	05-Apr-17 A	29-Aug-17				
A4420	ABWF, Plumbing Works, waterproofing and E&M works	60d	05-Apr-17 A	12-Aug-17	ABWF, Plumbing Worl			
A4470	Lay CWP, FWP and FSP inside NC (inspection by WSD & FSD)	45d	08-Jul-17	29-Aug-17				
KD11, KD12, KD13, KD18 Establishment Works for Landscape Softworks		1087d	23-Feb-15 A	10-Mar-18				
KD11 - Section 7A: Portion XIV & XV (Victoria Park Open Space)		885d	23-Feb-15 A	10-Mar-18				
EW_1000	Establishment Works - for Landscape Softworks and transplanted trees in Portion XIV & XV	901d	23-Feb-15 A	10-Mar-18				
KD12 - Section 7B: Portion VI & VII (Reprov. Bowling Green Area)		177d	03-Dec-15 A	22-May-17				
EW_1010	Establishment Works - for Landscape Softworks and transplanted trees in Portion VI & VII	177d	03-Dec-15 A	22-May-17	Establishment Works - for Landscape Softworks and transplanted trees in Portion VI & VII			
KD10 - Preservation and Protection of Trees		1088d	21-Mar-13 A	22-May-17				
PPT_0000	Preservation and Protection of Existing Trees	1088d	21-Mar-13 A	22-May-17	Preservation and Protection of Existing Trees			
KD15 & KD8 - Mooring Components Upkeep (CBTS and ATS)		980d	15-May-14 A	22-May-17				
MAR_3020	Mooring Upkeep at Portion X(10) & XVI(16) - CBTS	979d	15-May-14 A	22-May-17	Mooring Upkeep at Portion X(10) & XVI(16) - CBTS			
Works for Public Works Regional Laboratory (North Lantau) - KD1, KD16, KD17		1301d	19-Jul-13 A	21-Nov-17				
KD17 - Maintenance and Upkeep of New PWRL (Portion XVII)		1301d	19-Jul-13 A	21-Nov-17				
PWRL_1050	Maintenance/ Upkeep of New PWRL	1301d	19-Jul-13 A	21-Nov-17				

CWB(CC) - Commissioning Contract

TASK filters: 3 Months_4, 3MRP, No Original Sections, No Summary, Not HL.

Activity ID	Activity Name	Original Duration	Start	Finish	Total Float	2017																
						Jul	Aug	Sep	Oct	Nov	Dec	Jan	Feb	Mar	Apr	May	Jun					
Update 2017-07-20 CWB(CC) - Commissioning Contract (DWP R2d)																						
PRELIMINARIES AND GENERAL REQUIREMENTS																						
Salient Key Dates and Milestones																						
Contract Key Dates																						
KD002	KD2 - Achievement of Stage 2 (1232 days)	0		20-Jul-17*	-6																	
KD003	KD3 - Achievement of Stage 3 (1178 days)	0		20-Jul-17*	-60																	
KD001a	KD1 - Achievement of Stage 1 (1177 days) - include EOT No.3 (123 Days)	0		20-Jul-17*	-61																	
KD004	KD4 - Achievement of Stage 4 (1296 days)	0		15-Sep-17*	0																	
KD005	KD5 - Achievement of Stage 5 (1296 days)	0		15-Sep-17*	0																	
KD006	KD6 - Completion of Section 1 of the Works (1296 days)	0		15-Sep-17*	0																	
KD009	KD9 - Completion of Section 4 of the Works (1296 days)	0		15-Sep-17*	0																	
KD011	KD11 - Completion of Section 6 of the Works (1296 days)	0		15-Sep-17*	0																	
Possession Dates and Vacation Dates																						
PO-Vb2_b	Possession of Portion V (Day 607) - SCP3	121	03-Jul-17 A	18-Oct-17	-700																	
PO-IVc	Possession of Portion IVc (Day 1144) - MVB (above +5.0mPD)	91	20-Jul-17	18-Oct-17	-175																	
PO-VIb_a	Possession of Portion VIb (Day 761) - CH3400-3428	80	31-Jul-17	18-Oct-17	-472																	
PO-VIa_b	Possession of Portion VIa (Day 823) - CH3283-3400	80	31-Jul-17	18-Oct-17	-459																	
Submissions and Approvals																						
Initial General Submission																						
9932	Submission of 1st Project video film Video1 / Video2 (Release II)	0		20-Jul-17*	-900																	
DETAILED DESIGN OF WORKS																						
Permanent Works Design and Engineering																						
Metal Roof on MVB																						
2194	MVB Roof - Engineer review & Approval; Consent to Proceed Construction	24	06-Jun-17 A	03-Jul-17 A																		
Green Roof on EVB																						
2166	EVB Roof - Engineer review & Approval; Consent to Proceed Construction	24	18-Apr-16 A	11-Aug-17	-443																	
Green Wall on ADB																						
10238	ADB Green Wall - Engineer review & Approval; Consent to Proceed Construction	24	07-Mar-16 A	11-Aug-17	-384																	
Landscaping & Associated Irrigation System																						
10268	Landscaping - Engineer review & Approval; Consent to Proceed Construction	24	07-Mar-16 A	11-Aug-17	-185																	
Access Road at Area D & E																						
12720	Access Road at Area D & E - Prepare design submission	24	20-Jul-17*	16-Aug-17	-222																	
12726	Access Road at Area D & E - Submission of design to MTRC / AECOM	0		16-Aug-17	-89																	

- Current Milestone
- Level of Effort
- Baseline Milestone
- Actual Work
- Critical Remaining Work
- Remaining Work
- Project Baseline

Leighton Contractors (Asia) Limited Programme Update 40 (June 2017) THREE MONTH ROLLING

Project ID: H2613-U041
 Baseline: DWP2d
 Layout: Update Three Month Rolling U041
 Page 1 of 30

Date	Revision	Checked	Approved
20-May-17	U039	AT	CW
20-Jun-17	U040	AT	CW

CWB(CC) - Commissioning Contract

TASK filters: 3 Months_4, 3MRP, No Original Sections, No Summary, Not HL.

Activity ID	Activity Name	Original Duration	Start	Finish	Total Float	2017			
						Jul	Aug	Sep	Oct
12724	Access Road at Area D & E - MTRC/AECOM review & Approval; Consent to Proceed Construction	28	17-Aug-17	18-Sep-17	-89				
PROCUREMENT, MANUFACTURING & DELIVERIES									
Procurement; Manufacturing; Deliveries									
Metal Roof on MVB									
Shop Drawings									
2200	MVB Roof - Shop Drawings submission to the Engineer	30	06-Jun-17 A	31-Jul-17	-423				
12842	MVB Roof - Shop Drawings review by the Engineer	30	01-Aug-17	30-Aug-17	-423				
2202	MVB Roof - Obtain Approval for Shop Drawings	0		30-Aug-17	-423				
Procurement & Fabrication									
2204	MVB Roof - Confirm design of embed items	0	31-Aug-17		-423				
2206	MVB Roof - Embed fabrication & delivery	48	31-Aug-17	17-Oct-17	-423				
2208	MVB Roof - Commence embed installation	0	18-Oct-17		-423				
2210	MVB Roof - Metal Roof Fabrication	48	18-Oct-17	04-Dec-17	-423				
Metal Roof on WVB									
Procurement & Fabrication									
2224	WVB Roof - Metal Roof Fabrication and Delivery (For Tunnel portal side)	62	23-Nov-16 A	17-Jul-17 A					
Green Roof on EVB									
Shop Drawings									
2228	EVB Green Roof - Shop Drawings submission to the Engineer	30	12-Aug-17	10-Sep-17	-556				
12846	EVB Green Roof - Shop Drawings review the Engineer	30	11-Sep-17	10-Oct-17	-556				
2230	EVB Green Roof - Obtain Approval for Shop Drawings	0		10-Oct-17	-556				
Procurement & Fabrication									
2232	EVB Green Roof - Confirm design of embed items	0	11-Oct-17		-556				
2234	EVB Green Roof - Embed fabrication & delivery	60	11-Oct-17	09-Dec-17	-556				
Landscaping and Associated Irrigation System									
Shop Drawings									
10272	Landscaping - Shop Drawings submission to the Engineer	30	12-Aug-17	10-Sep-17	-235				
12848	Landscaping - Shop Drawings review by the Engineer	30	11-Sep-17	10-Oct-17	-235				
10274	Landscaping - Obtain Approval for Shop Drawings	0		10-Oct-17	-235				
Procurement & Fabrication									
10276	Landscaping - Confirm design of embed items	0	11-Oct-17		-235				
10278	Landscaping - Embed fabrication & delivery	60	11-Oct-17	09-Dec-17	-235				
Green Wall on ADB									

- Current Milestone
- Level of Effort
- Baseline Milestone
- Actual Work
- Critical Remaining Work
- Remaining Work
- Project Baseline

Leighton Contractors (Asia) Limited Programme Update 40 (June 2017) THREE MONTH ROLLING

Project ID: H2613-U041
Baseline: DWP2d
Layout: Update Three Month Rolling U041
Page 2 of 30

Date	Revision	Checked	Approved
20-May-17	U039	AT	CW
20-Jun-17	U040	AT	CW

CWB(CC) - Commissioning Contract

TASK filters: 3 Months_4, 3MRP, No Original Sections, No Summary, Not HL.

Activity ID	Activity Name	Original Duration	Start	Finish	Total Float	2017					
						Jul	Aug	Sep	Oct		
Shop Drawings											
10242	ADB Green Wall - Shop Drawings submission to the Engineer	30	12-Aug-17	10-Sep-17	-476						
12850	ADB Green Wall - Shop Drawings review the Engineer	30	11-Sep-17	10-Oct-17	-476						
10244	ADB Green Wall - Obtain Approval for Shop Drawings	0		10-Oct-17	-476						
Procurement & Fabrication											
10246	ADB Green Wall - Confirm design of embed items	0	11-Oct-17		-476						
10248	ADB Green Wall - Embed fabrication & delivery	60	11-Oct-17	09-Dec-17	-476						
VE Brackets / Panels											
Procurement & Fabrication											
12508	VE Brackets / Panels - Manufacturing & Delivery (Panels)	60	11-Dec-15 A	08-Aug-17	-421						
Architectural Feature on EVS											
Procurement & Fabrication											
2252	EVS - Architectural Features Fabrication	90	17-Jan-17 A	08-Aug-17	-407						
10086	EVS - Architectural Features delivery	60	02-Jun-17 A	28-Aug-17	-407						
2254	EVS - Commence installation	0	20-Jul-17		-407						
Air Purification System (APS)											
Procurement & Fabrication											
10088	APS - Ship to HK Store (2nd Batch)	80	18-Jan-17 A	02-Aug-17	-297						
13664	APS - Ship to HK Store (3rd Batch)	80	03-Aug-17	22-Nov-17	-297						
Building Services System											
Shop Drawings / CSD / CBWD											
2314	BS(MVB) - Obtain Approval for Shop Drawings, CSD & CBWD	0		20-Jul-17	58						
2318	BS(EVB) - Obtain Approval for Shop Drawings, CSD & CBWD	0		20-Jul-17	-111						
Thermal Barriers											
Procurement & Fabrication											
12824	TB - Delivery for Thermal Barriers materials(remaining batches)	90	27-Jun-15 A	08-Aug-17	-625						
CONSTRUCTION											
West Ventilation Building (WVB - related)											
Tunnel Section (WVB-related)											
Portion Ia [CH840 to CH1360]											
13086a	Request for VO instruction for TCSS equipment installation and cabling (Ganty FADS01) (Ref: H27613-LJV-ME-LE-4022)	24	04-Oct-16 A	23-Aug-17	-86						
13086	TCSS cabling and sign face installation (FADS01) - Start date is tentative and need to be confirmed at a later stage	40	24-Aug-17	11-Oct-17	-86						
Westbound											

- Current Milestone
- Level of Effort
- Baseline Milestone
- Actual Work
- Critical Remaining Work
- Remaining Work
- Project Baseline

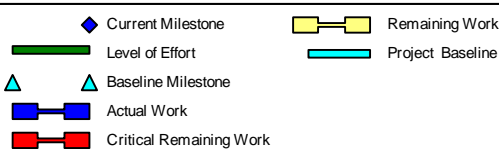
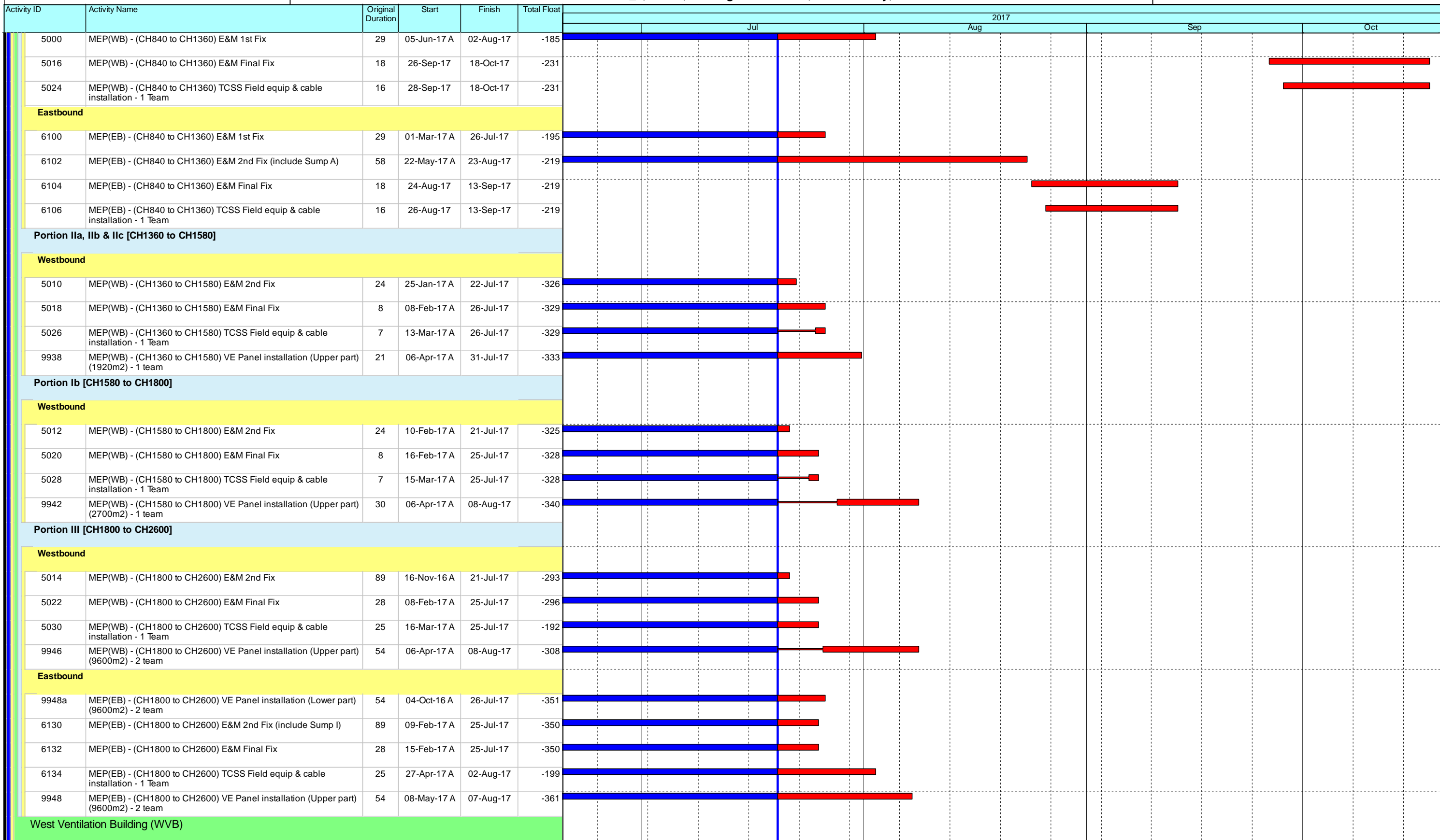
Leighton Contractors (Asia) Limited Programme Update 40 (June 2017) THREE MONTH ROLLING

Project ID: H2613-U041
Baseline: DWP2d
Layout: Update Three Month Rolling U041
Page 3 of 30

Date	Revision	Checked	Approved
20-May-17	U039	AT	CW
20-Jun-17	U040	AT	CW

CWB(CC) - Commissioning Contract

TASK filters: 3 Months_4, 3MRP, No Original Sections, No Summary, Not HL.



Leighton Contractors (Asia) Limited Programme Update 40 (June 2017) THREE MONTH ROLLING

Project ID: H2613-U041
Baseline: DWP2d
Layout: Update Three Month Rolling U041
Page 4 of 30

Date	Revision	Checked	Approved
20-May-17	U039	AT	CW
20-Jun-17	U040	AT	CW

CWB(CC) - Commissioning Contract

TASK filters: 3 Months_4, 3MRP, No Original Sections, No Summary, Not HL.

Activity ID	Activity Name	Original Duration	Start	Finish	Total Float	2017											
						Jul			Aug			Sep			Oct		
RC Structures and Metal Roof																	
Metal Roof																	
Metal Roof Eastern Side (M.J. East)																	
10442a4	WVB - Installation of extra roof fins support (M.J.East) (VO) (Tentative, duration subject to change)	42	20-Jul-17	06-Sep-17	-267	[Gantt bar: Jul 20 - Sep 06]											
10452a	WVB - Roof cladding / (East Boundary)	30	07-Sep-17	13-Oct-17	-267	[Gantt bar: Sep 07 - Oct 13]											
Metal Roof Western Side (M.J. West)																	
10442	WVB - Installation of temporary roof support at tunnel portal	18	29-Jun-17 A	17-Jul-17 A		[Gantt bar: Jun 29 - Jul 17]											
10440	WVB - Erection of 1st steel structure at tunnel portal	6	18-Jul-17 A	24-Jul-17	-400	[Gantt bar: Jul 18 - Jul 24]											
10444	WVB - Installation of steel truss at tunnel portal (connecting to the 1st steel structure)	18	25-Jul-17	14-Aug-17	-400	[Gantt bar: Jul 25 - Aug 14]											
10446	WVB - Dismantle temporary roof support at tunnel portal	12	15-Aug-17	28-Aug-17	-400	[Gantt bar: Aug 15 - Aug 28]											
10450	WVB - Installation of steel roof structure (steel trusts) (Western side)	30	29-Aug-17	03-Oct-17	-400	[Gantt bar: Aug 29 - Oct 03]											
13666	WVB - Installation of extra roof fins support (M.J.West) (VO) (Tentative, duration subject to change)	36	04-Oct-17	16-Nov-17	-400	[Gantt bar: Oct 04 - Nov 16]											
MEP & ABWF Works																	
3088	MEP(WVB) - TCSS Enabling Works	30	04-Sep-17	10-Oct-17	-253	[Gantt bar: Sep 04 - Oct 10]											
3058	WVB - Metal works / steel platform / Ladders / Handrails	60	04-Oct-17	14-Dec-17	-284	[Gantt bar: Oct 04 - Dec 14]											
E&M Individual System T&C																	
10672a	MEP(WVB) - MVAC system	24	11-May-17 A	28-Jul-17	-204	[Gantt bar: May 11 - Jul 28]											
10672d	MEP(WVB) - CCMS SAT	30	25-May-17 A	05-Aug-17	-175	[Gantt bar: May 25 - Aug 05]											
10672n	MEP(WVB) - SAT - Other E&M systems	12	25-May-17 A	31-Jul-17	-170	[Gantt bar: May 25 - Jul 31]											
10672b	MEP(WVB) - TVS System Test	12	29-Jul-17	11-Aug-17	-204	[Gantt bar: Jul 29 - Aug 11]											
10672m	MEP(WVB) - Damper control panel and tunnel motorized damper functional test	24	12-Aug-17	08-Sep-17	-204	[Gantt bar: Aug 12 - Sep 08]											
Basement																	
TV Plenum (B1-02)																	
10660	MEP(WVB) - E&M final fixing	24	02-Mar-17 A	21-Jun-17 A		[Gantt bar: Mar 02 - Jun 21]											
Sump Pump Room (B1-03)																	
10668	MEP(WVB) - E&M final fixing	24	13-Feb-17 A	21-Jul-17	-162	[Gantt bar: Feb 13 - Jul 21]											
G/F																	
Rain Water & Irrigation Water Tank & Pump Room (G-23)																	
10772	MEP(WVB) - E&M final fixing	24	01-Feb-17 A	21-Jul-17	-162	[Gantt bar: Feb 01 - Jul 21]											
1/F																	
Gas Cylinder Room (L1-05)																	
10822	MEP(WVB) - E&M final fixing	24	18-Jan-17 A	21-Jul-17	-162	[Gantt bar: Jan 18 - Jul 21]											
Computer Equipment Room (L1-09)																	

- ◆ Current Milestone
- ▬ Level of Effort
- ▲ Baseline Milestone
- ▬ Actual Work
- ▬ Critical Remaining Work
- ▬ Remaining Work
- ▬ Project Baseline

Leighton Contractors (Asia) Limited Programme Update 40 (June 2017) THREE MONTH ROLLING

Project ID: H2613-U041
Baseline: DWP2d
Layout: Update Three Month Rolling U041
Page 5 of 30

Date	Revision	Checked	Approved
20-May-17	U039	AT	CW
20-Jun-17	U040	AT	CW

CWB(CC) - Commissioning Contract

TASK filters: 3 Months_4, 3MRP, No Original Sections, No Summary, Not HL.

Activity ID	Activity Name	Original Duration	Start	Finish	Total Float	2017			
						Jul	Aug	Sep	Oct
12732	MEP(WVB) - E&M 1st fixing	24	05-Aug-16 A	22-Jun-17 A					
12738	MEP(WVB) - E&M 2nd fixing	24	09-Aug-16 A	30-Jun-17 A					
12740	MEP(WVB) - E&M final fixing	30	11-Oct-16 A	26-Jul-17	-166				
General Area & Corridor									
10804	MEP(WVB) - E&M 2nd fixing	30	10-Aug-16 A	22-Jul-17	-163				
APS									
3166	APS(WVB) - T&C	24	10-Apr-17 A	25-Jul-17	-193				
External Works									
3100e	WVB - Drainage and Pavement (North)	84	09-Jan-17 A	20-Jun-17 A					
3100c	WVB - Extension of parapet wall (VO/131)	45	15-Aug-17	07-Oct-17	-349				
3100d	WVB - Podium structure near Gate 4 (VO/131)	45	29-Aug-17	21-Oct-17	-298				
3100b	WVB - waterproofing between building and tunnel roof interface and backfill	66	04-Oct-17	21-Dec-17	-400				
Landscaping and Irrigation Systems									
3136	WVB - Final completion test for irrigation systems in Portion IIb	60	09-Sep-17	07-Nov-17	-113				
Tunnel Flexible Pavement (WVB-related)									
5800	Road(WB) - (CH1480 to CH2600) Flexible Pavement	14	19-Oct-17	04-Nov-17	-231				
Satellite Control Building (SCB)									
ABWF Works									
3926	SCB - ABWF (Dry Trade)	24	11-Apr-17 A	31-Jul-17	-233				
3926a	SCB - Glass windows design approval and installation	24	05-Jun-17 A	31-Jul-17	-191				
3928	SCB - Metal works / steel platform / Ladders / Handrails	36	01-Aug-17	11-Sep-17	-191				
External Facade									
3930	SCB - External facing tiles / Louvre	48	01-Aug-17	25-Sep-17	-233				
MEP Works									
3934	MEP(SCB) - E&M 1st Fix	24	06-Jun-17 A	02-Aug-17	-187				
3938	MEP(SCB) - E&M 2nd Fix	24	29-Jun-17 A	09-Aug-17	-187				
3936	MEP(SCB) - TCSS Enabling Works	18	03-Jul-17 A	25-Jul-17	-180				
3940	MEP(SCB) - E&M Final Fix	24	06-Jul-17 A	14-Aug-17	-191				
3942	MEP(SCB) - E&M Individual System T&C	12	02-Aug-17	15-Aug-17	-191				
3960a	MEP(SCB) - Construction of underground ductings / footings for UPS pillar box (Besides SCB) -After site office relocate	18	01-Sep-17*	21-Sep-17	-253				
3944	MEP(SCB) - E&M Final Completion Works; Ready for Statutory Inspections	30	22-Sep-17	30-Oct-17	-230				
3960b	MEP(SCB) - UPS pillar box installation	6	22-Sep-17	28-Sep-17	-253				
3960c	MEP(SCB) - UPS pillar box equipment installation	12	29-Sep-17	14-Oct-17	-253				

- Current Milestone
- Level of Effort
- Baseline Milestone
- Actual Work
- Critical Remaining Work
- Remaining Work
- Project Baseline

Leighton Contractors (Asia) Limited Programme Update 40 (June 2017) THREE MONTH ROLLING

Project ID: H2613-U041
Baseline: DWP2d
Layout: Update Three Month Rolling U041
Page 6 of 30

Date	Revision	Checked	Approved
20-May-17	U039	AT	CW
20-Jun-17	U040	AT	CW

CWB(CC) - Commissioning Contract

TASK filters: 3 Months_4, 3MRP, No Original Sections, No Summary, Not HL.

Activity ID	Activity Name	Original Duration	Start	Finish	Total Float	2017			
						Jul	Aug	Sep	Oct
10030	Iva (SR1) - Thermal Barrier installation (include protection removal) - 1 team	33	18-Aug-17	25-Sep-17	-327				
10018	MEP(SR1) - (CH171 to CH271) E&M 1st Fix	4	26-Sep-17	29-Sep-17	-277				
10046a	MEP(SR1) - (CH171 to CH271) VE Panel installation (Lower part) (1200m2) - 1 team	13	26-Sep-17	12-Oct-17	-327				
10020	MEP(SR1) - (CH171 to CH271) E&M 2nd Fix (include Sump B)	30	30-Sep-17	07-Nov-17	-277				
Westbound (CH2600 to CH2720)									
5100a	MEP(WB) - (CH2600 to CH2720) E&M 1st Fix	12	02-May-17 A	31-Jul-17	-213				
5102a	MEP(WB) - (CH2600 to CH2720) E&M 2nd Fix	12	01-Aug-17	14-Aug-17	-213				
Eastbound (CH2600 to CH2720)									
5118a	MEP(EB) - (CH2600 to CH2720) E&M 1st Fix	12	12-Apr-17 A	31-Jul-17	-214				
5120a	MEP(EB) - (CH2600 to CH2720) E&M 2nd Fix	7	01-Aug-17	08-Aug-17	-214				
5124a	MEP(EB) - (CH2600 to CH2720) TCSS Field equip & cable installation - 1 Team	6	09-Aug-17	15-Aug-17	-214				
Westbound (CH2720 to CH2950)									
5100b	MEP(WB) - (CH2720 to CH2950) E&M 1st Fix	19	09-Aug-17	30-Aug-17	-227				
5102b	MEP(WB) - (CH2720 to CH2950) E&M 2nd Fix	12	31-Aug-17	13-Sep-17	-227				
9950b	MEP(WB) - (CH2720 to CH2950) VE Panel installation (Lower part) (2247m2) - 2 team	13	13-Oct-17	27-Oct-17	-327				
Eastbound (CH2720 to CH2950)									
12224b	Iva (EB) - Anchorage installation for subsequent E&M 1st Fix and VE panel frame support (include protection) (2247m2)	13	15-May-17 A	02-Aug-17	-494				
5130b	Iva(EB) - Thermal Barrier installation (include protection removal) - 2 team	38	09-Aug-17	21-Sep-17	-499				
Portion Va [CH2950 to CH3210]									
5147	V - Site suspended according to AECOM's instruction	4	27-Jun-17 A	01-Jul-17 A					
Westbound (Outer Lane)									
5134a	MEP(WB) - (CH2950 to CH3210) E&M 2nd Fix	33	23-Feb-17 A	02-Aug-17	-305				
5136a	MEP(WB) - (CH2950 to CH3210) E&M Final Fix	10	11-Sep-17	21-Sep-17	-338				
5136a2	MEP(WB) - (CH2950 to CH3210) Niche installation	4	15-Sep-17	19-Sep-17	-560				
9954a	MEP(WB) - (CH2950 to CH3210) VE Panel installation (Upper part) (1800m2) - 1 team	20	29-Sep-17	24-Oct-17	-364				
Eastbound (Outer Lane)									
9956b	MEP(EB) - (CH2950 to CH3210) VE Panel installation (Lower part) (1800m2) - 1 team	20	06-Dec-16 A	25-Jul-17	-147				
5152a	MEP(EB) - (CH2950 to CH3210) E&M 2nd Fix	33	04-Mar-17 A	02-Aug-17	-144				
9956a	MEP(EB) - (CH2950 to CH3210) VE Panel installation (Upper part) (1800m2) - 1 team	20	01-Sep-17	23-Sep-17	-179				
5156a2	MEP(EB) - (CH2950 to CH3210) Niche installation	4	20-Sep-17	23-Sep-17	-560				
Portion Vb1 (SR3)									
Slip Road 3									
10032b	MEP(SR3) - (CH3089 to CH3334) E&M 1st Fix	13	15-Mar-17 A	27-Jul-17	-395				

- Current Milestone
- Level of Effort
- Baseline Milestone
- Actual Work
- Critical Remaining Work
- Remaining Work
- Project Baseline

Leighton Contractors (Asia) Limited Programme Update 40 (June 2017) THREE MONTH ROLLING

Project ID: H2613-U041
Baseline: DWP2d
Layout: Update Three Month Rolling U041
Page 8 of 30

Date	Revision	Checked	Approved
20-May-17	U039	AT	CW
20-Jun-17	U040	AT	CW

CWB(CC) - Commissioning Contract

TASK filters: 3 Months_4, 3MRP, No Original Sections, No Summary, Not HL.

Activity ID	Activity Name	Original Duration	Start	Finish	Total Float	2017			
						Jul	Aug	Sep	Oct
10036b	MEP(SR3) - (CH3089 to CH3334) TCSS Field equip & cable installation - 1 Team	8	15-Mar-17 A	27-Jul-17	-368	[Gantt bar: 15-Mar-17 to 27-Jul-17]			
10034b	MEP(SR3) - (CH3089 to CH3334) E&M 2nd Fix (include Sump C)	27	28-Jul-17	28-Aug-17	-395	[Gantt bar: 28-Jul-17 to 28-Aug-17]			
10048b	MEP(SR3) - (CH3089 to CH3334) VE Panel installation (Upper part) (2940m2) - 1 team	33	10-Aug-17	16-Sep-17	-404	[Gantt bar: 10-Aug-17 to 16-Sep-17]			
10038b	MEP(SR3) - (CH3089 to CH3334) E&M Final Fix	8	08-Sep-17	16-Sep-17	-404	[Gantt bar: 08-Sep-17 to 16-Sep-17]			
10038b2	MEP(SR3) - (CH3089 to CH3334) Niche installation	2	13-Sep-17	14-Sep-17	-560	[Gantt bar: 13-Sep-17 to 14-Sep-17]			
Portion Vb2 (SR2 / SCP3)									
Slip Road 2									
10050b	MEP(SR2) - (CH3114 to CH3257) E&M 1st Fix	8	08-Mar-17 A	24-Jul-17	-560	[Gantt bar: 08-Mar-17 to 24-Jul-17]			
10056b	MEP(SR2) - (CH3114 to CH3257) TCSS Field equip & cable installation - 1 Team	5	16-Mar-17 A	24-Jul-17	-201	[Gantt bar: 16-Mar-17 to 24-Jul-17]			
10052b	MEP(SR2) - (CH3114 to CH3257) E&M 2nd Fix (include Sump F)	40	25-Jul-17	08-Sep-17	-560	[Gantt bar: 25-Jul-17 to 08-Sep-17]			
10054b	MEP(SR2) -(CH3114 to CH3257) E&M Final Fix	5	09-Sep-17	14-Sep-17	-341	[Gantt bar: 09-Sep-17 to 14-Sep-17]			
10054b2	MEP(SR2) -(CH3114 to CH3257) Niche installation	3	09-Sep-17*	12-Sep-17	-560	[Gantt bar: 09-Sep-17 to 12-Sep-17]			
Portion Vc [CH3210 to CH3250]									
Westbound (Outer Lane)									
5134c	MEP(WB) - (CH3210 to CH3250) E&M 2nd Fix	18	23-Feb-17 A	29-Jul-17	-322	[Gantt bar: 23-Feb-17 to 29-Jul-17]			
9954c	MEP(WB) - (CH3210 to CH3250) VE Panel installation (Upper part) (1800m2) - 1 team	20	06-Sep-17	28-Sep-17	-364	[Gantt bar: 06-Sep-17 to 28-Sep-17]			
5136c	MEP(WB) - (CH3210 to CH3250) E&M Final Fix	10	18-Sep-17	28-Sep-17	-364	[Gantt bar: 18-Sep-17 to 28-Sep-17]			
5136c2	MEP(WB) - (CH3210 to CH3250) Niche installation	2	25-Sep-17	26-Sep-17	-560	[Gantt bar: 25-Sep-17 to 26-Sep-17]			
Eastbound (Outer Lane)									
5152c	MEP(EB) - (CH3210 to CH3250) E&M 2nd Fix	18	02-Mar-17 A	29-Jul-17	-141	[Gantt bar: 02-Mar-17 to 29-Jul-17]			
9956c	MEP(EB) - (CH3210 to CH3250) VE Panel installation (Upper part) (1800m2) - 1 team	20	09-Aug-17	31-Aug-17	-179	[Gantt bar: 09-Aug-17 to 31-Aug-17]			
5156c	MEP(EB) - (CH3210 to CH3250) E&M Final Fix	10	20-Sep-17	30-Sep-17	-185	[Gantt bar: 20-Sep-17 to 30-Sep-17]			
5156c2	MEP(EB) - (CH3210 to CH3250) Niche installation	2	27-Sep-17	28-Sep-17	-560	[Gantt bar: 27-Sep-17 to 28-Sep-17]			
Portion VIa [CH3250 to CH3283]									
Westbound									
5178a	VIa(WB) - Mobilisation & Setup	8	20-Jul-17	28-Jul-17	-405	[Gantt bar: 20-Jul-17 to 28-Jul-17]			
12234a	VIa(WB) - Anchorage installation for subsequent E&M 1st Fix and VE panel frame support (include protection) (528m2)	6	29-Jul-17	04-Aug-17	-405	[Gantt bar: 29-Jul-17 to 04-Aug-17]			
5180a	VIa(WB) - Thermal Barrier installation (include protection removal) - 1 team	11	05-Aug-17	17-Aug-17	-405	[Gantt bar: 05-Aug-17 to 17-Aug-17]			
5164a	MEP(WB) - (CH3250 to CH3283) E&M 1st Fix	6	18-Aug-17	24-Aug-17	-405	[Gantt bar: 18-Aug-17 to 24-Aug-17]			
9958a1	MEP(WB) - (CH3250 to CH3283) VE Panel installation (Lower part) (528m2) - 1 team	6	18-Aug-17	24-Aug-17	-378	[Gantt bar: 18-Aug-17 to 24-Aug-17]			
5166a	MEP(WB) - (CH3250 to CH3283) E&M 2nd Fix	6	25-Aug-17	31-Aug-17	-405	[Gantt bar: 25-Aug-17 to 31-Aug-17]			
5170a	MEP(WB) - (CH3250 to CH3283) TCSS Field equip & cable installation - 1 Team	5	01-Sep-17	06-Sep-17	-405	[Gantt bar: 01-Sep-17 to 06-Sep-17]			
9958a	MEP(WB) - (CH3250 to CH3283) VE Panel installation (Upper part) (528m2) - 1 team	6	18-Sep-17	23-Sep-17	-404	[Gantt bar: 18-Sep-17 to 23-Sep-17]			

- Current Milestone
- Level of Effort
- Baseline Milestone
- Actual Work
- Critical Remaining Work
- Remaining Work
- Project Baseline

Leighton Contractors (Asia) Limited Programme Update 40 (June 2017) THREE MONTH ROLLING

Project ID: H2613-U041
Baseline: DWP2d
Layout: Update Three Month Rolling U041
Page 9 of 30

Date	Revision	Checked	Approved
20-May-17	U039	AT	CW
20-Jun-17	U040	AT	CW

CWB(CC) - Commissioning Contract

TASK filters: 3 Months_4, 3MRP, No Original Sections, No Summary, Not HL.

Activity ID	Activity Name	Original Duration	Start	Finish	Total Float	2017											
						Jul			Aug			Sep			Oct		
Eastbound																	
5194a	Vla(EB) - Thermal Barrier installation (include protection removal) - 1 team	11	10-Dec-16 A	26-Jul-17	-397												
9960a1	MEP(EB) - (CH3250 to CH3283) VE Panel installation (Lower part) (528m2) - 1 team	6	25-Aug-17	31-Aug-17	-378												
Portion Vla [CH3283 to CH3400]																	
5174b	Possession of Portion Vla	0	31-Jul-17		-369												
5176b	Vla - Initial Site Survey	12	31-Jul-17	12-Aug-17	-369												
Westbound																	
5178b	Vla(WB) - Mobilisation & Setup	12	14-Aug-17	26-Aug-17	-369												
12234b	Vla(WB) - Anchorage installation for subsequent E&M 1st Fix and VE panel frame support (include protection) (1872m2)	21	28-Aug-17	20-Sep-17	-369												
Eastbound																	
5192b	Vla(EB) - Mobilisation & Setup	8	21-Sep-17	29-Sep-17	-359												
12236b	Vla(EB) - Anchorage installation for subsequent E&M 1st Fix and VE panel frame support (include protection) (1872m2)	21	30-Sep-17	26-Oct-17	-359												
Portion Vlb [CH3400 to CH3428]																	
5206b1	Possession of Portion Vlb	0	31-Jul-17		-380												
5208b1	Vlb - Initial Site Survey	12	31-Jul-17	12-Aug-17	-380												
Westbound																	
5210b1	Vlb(WB) - Mobilisation & Setup	12	14-Aug-17	26-Aug-17	-370												
12238b1	Vlb(WB) - Anchorage installation for subsequent E&M 1st Fix and VE Panel frame support (include protection) (336m2)	4	28-Aug-17	31-Aug-17	-370												
5200b9	MEP(WB) - (CH3400 to CH3428) Niche installation	2	16-Oct-17	17-Oct-17	-560												
Eastbound																	
5224b1	Vlb(EB) - Mobilisation & Setup	12	14-Aug-17	26-Aug-17	-380												
12240b1	Vlb(EB) - Anchorage installation for subsequent E&M 1st Fix and VE Panel frame support (include protection) (4800m2)	4	28-Aug-17	31-Aug-17	-380												
5226b1	Vlb(EB) - Thermal Barrier installation (include protection removal) - 1 team	10	13-Oct-17	24-Oct-17	-414												
5218b9	MEP(EB) - (CH3400 to CH3428) Niche installation	2	18-Oct-17	19-Oct-17	-560												
Portion Vlb [CH3428 to CH3625]																	
Westbound																	
5196b2	MEP(WB) - (CH3428 to CH3625) E&M 1st Fix	12	07-Dec-16 A	21-Jul-17	-394												
5198b2	MEP(WB) - (CH3428 to CH3625) E&M 2nd Fix	12	15-Mar-17 A	27-Jul-17	-283												
5202b2	MEP(WB) - (CH3428 to CH3625) TCSS Field equip & cable installation - 1 Team	12	18-Mar-17 A	31-Jul-17	-402												
9962b2	MEP(WB) - (CH3428 to CH3625) VE Panel installation (Upper part) (2364m2) - 1 team	27	02-Sep-17	04-Oct-17	-329												
5200b2	MEP(WB) - (CH3428 to CH3625) E&M Final Fix	12	20-Sep-17	04-Oct-17	-329												
5200b5	MEP(WB) - (CH3428 to CH3625) Niche installation	2	29-Sep-17	30-Sep-17	-560												
Eastbound																	

- Current Milestone
- Level of Effort
- Baseline Milestone
- Actual Work
- Critical Remaining Work
- Remaining Work
- Project Baseline

Leighton Contractors (Asia) Limited Programme Update 40 (June 2017) THREE MONTH ROLLING

Project ID: H2613-U041
Baseline: DWP2d
Layout: Update Three Month Rolling U041
Page 10 of 30

Date	Revision	Checked	Approved
20-May-17	U039	AT	CW
20-Jun-17	U040	AT	CW

CWB(CC) - Commissioning Contract

TASK filters: 3 Months_4, 3MRP, No Original Sections, No Summary, Not HL.

Activity ID	Activity Name	Original Duration	Start	Finish	Total Float	2017			
						Jul	Aug	Sep	Oct
5214b2	MEP(EB) - (CH3428 to CH3625) E&M 1st Fix	12	24-Apr-17 A	26-Jul-17	-398	[Gantt bar: 24-Apr-17 to 26-Jul-17]			
5216b2	MEP(EB) - (CH3428 to CH3625) E&M 2nd Fix	12	27-Jul-17	09-Aug-17	-152	[Gantt bar: 27-Jul-17 to 09-Aug-17]			
5220b2	MEP(EB) - (CH3428 to CH3625) TCSS Field equip & cable installation - 1 Team	12	01-Aug-17	14-Aug-17	-402	[Gantt bar: 01-Aug-17 to 14-Aug-17]			
5218b5	MEP(EB) - (CH3428 to CH3625) Niche installation	2	06-Oct-17	07-Oct-17	-560	[Gantt bar: 06-Oct-17 to 07-Oct-17]			
Portion V1b [CH3625 to CH3770]									
Westbound									
5196b3	MEP(WB) - (CH3625 to CH3770) E&M 1st Fix	12	02-Mar-17 A	22-Jul-17	-383	[Gantt bar: 02-Mar-17 to 22-Jul-17]			
9962b3a	MEP(WB) - (CH3625 to CH3770) VE Panel installation (Lower part) (1740m2) - 1 team	20	29-May-17 A	27-Jun-17 A		[Gantt bar: 29-May-17 to 27-Jun-17]			
5198b3	MEP(WB) - (CH3625 to CH3770) E&M 2nd Fix	12	24-Jul-17	05-Aug-17	-271	[Gantt bar: 24-Jul-17 to 05-Aug-17]			
5202b3	MEP(WB) - (CH3625 to CH3770) TCSS Field equip & cable installation - 1 Team	12	15-Aug-17	28-Aug-17	-402	[Gantt bar: 15-Aug-17 to 28-Aug-17]			
5200b3	MEP(WB) - (CH3625 to CH3770) E&M Final Fix	12	22-Sep-17	07-Oct-17	-311	[Gantt bar: 22-Sep-17 to 07-Oct-17]			
5200b7	MEP(WB) - (CH3625 to CH3770) Niche installation	2	03-Oct-17	04-Oct-17	-560	[Gantt bar: 03-Oct-17 to 04-Oct-17]			
9962b3	MEP(WB) - (CH3625 to CH3770) VE Panel installation (Upper part) (1740m2) - 1 team	20	06-Oct-17	30-Oct-17	-329	[Gantt bar: 06-Oct-17 to 30-Oct-17]			
Eastbound									
9964b3a	MEP(EB) - (CH3625 to CH3770) VE Panel installation (Lower part) (1740m2) - 1 team	20	20-Jul-17	11-Aug-17	-361	[Gantt bar: 20-Jul-17 to 11-Aug-17]			
5218b7	MEP(EB) - (CH3625 to CH3770) Niche installation	2	09-Oct-17	10-Oct-17	-560	[Gantt bar: 09-Oct-17 to 10-Oct-17]			
Middle Ventilation Building (MVB)									
Establishment Works									
3310	Possession of Portion IVc	0	20-Jul-17		-175	[Milestone: 20-Jul-17]			
3220	MVB - Construct road and drainage works in Area D & E	48	19-Sep-17	16-Nov-17	-222	[Gantt bar: 19-Sep-17 to 16-Nov-17]			
3220a	Area D & E Possession (Tentative)	0	19-Sep-17*		-222	[Milestone: 19-Sep-17]			
RC Structures and Metal Roof									
13090	MVB - Plinths and Cast-in items at Basement (Late start, affected by CSLJV defect rectification works)	60	06-Mar-17 A	28-Jul-17	-347	[Gantt bar: 06-Mar-17 to 28-Jul-17]			
13092	MVB - Site suspended according to AECOM's instruction	4	27-Jun-17 A	01-Jul-17 A		[Gantt bar: 27-Jun-17 to 01-Jul-17]			
Zone A - G/F (GL A - D)									
G/F Other Rooms / Corridors / Staircase									
11224	MVB G/F (GL A-D) - Plinths / R.C. curbs	12	06-Jun-17 A	20-Jun-17 A		[Gantt bar: 06-Jun-17 to 20-Jun-17]			
Zone B - 1/F (GL D - H)									
11180	MVB Zone B (1/F) - Concrete for column / walls	1	20-Jun-17 A	20-Jun-17 A		[Gantt bar: 20-Jun-17 to 20-Jun-17]			
11184	MVB Zone B (1/F) - Decking / Formwork for beam & slab	6	21-Jun-17 A	23-Jun-17 A		[Gantt bar: 21-Jun-17 to 23-Jun-17]			
11186	MVB Zone B (1/F) - Rebar for beam & slab	7	22-Jun-17 A	23-Jun-17 A		[Gantt bar: 22-Jun-17 to 23-Jun-17]			
11188	MVB Zone B (1/F) - Close formwork for beam & slab	6	24-Jun-17 A	25-Jun-17 A		[Gantt bar: 24-Jun-17 to 25-Jun-17]			
11190	MVB Zone B (1/F) - Concrete beam & slab (2/F floor slab)	1	26-Jun-17 A	26-Jun-17 A		[Gantt bar: 26-Jun-17 to 26-Jun-17]			

◆ Current Milestone
▬ Level of Effort
▲ Baseline Milestone
▬ Actual Work
▬ Critical Remaining Work
▬ Remaining Work
▬ Project Baseline

Leighton Contractors (Asia) Limited Programme Update 40 (June 2017) THREE MONTH ROLLING

Project ID: H2613-U041
 Baseline: DWP2d
 Layout: Update Three Month Rolling U041
 Page 11 of 30

Date	Revision	Checked	Approved
20-May-17	U039	AT	CW
20-Jun-17	U040	AT	CW

CWB(CC) - Commissioning Contract

TASK filters: 3 Months_4, 3MRP, No Original Sections, No Summary, Not HL.

Activity ID	Activity Name	Original Duration	Start	Finish	Total Float	2017																	
						Jul	Aug	Sep	Oct														
1/F (GL D-H) Rooms / Corridors / Staircase																							
11244	MVB 1/F (GL D-H) - Plinths / R.C. curbs	12	20-Jun-17 A	26-Jun-17 A																			
Zone A - 1/F (GLA - D)																							
11168	MVB Zone A (1/F) - Decking / Formwork for beam & slab	4	14-Jun-17 A	08-Jul-17 A																			
11170	MVB Zone A (1/F) - Rebar for beam & slab	5	14-Jun-17 A	10-Jul-17 A																			
11172	MVB Zone A (1/F) - Close formwork for beam & slab	4	11-Jul-17 A	14-Jul-17 A																			
11174	MVB Zone A (1/F) - Concrete beam & slab (GL A-C Roof slab)	1	15-Jul-17 A	15-Jul-17 A																			
L1-03 Emergency Generator Room																							
11236	MVB L1-03 - Internal walls / Cast-in items	6	08-Jul-17 A	15-Jul-17 A																			
L1-05 F.S. Water Tank & Pump Room																							
11234	MVB L1-05 - Water Tank	20	20-Jun-17 A	15-Jul-17 A																			
1/F Other Rooms / Corridors / Staircase																							
11238	MVB 1/F (GL A-D) - Remaining internal walls / Cast-in items	24	17-Jun-17 A	30-Jun-17 A																			
11240	MVB 1/F (GL A-D) - Plinths / R.C. curbs	12	03-Jul-17 A	15-Jul-17 A																			
Zone B - 2/F (GL D - H)																							
3222	MVB Zone B (2/F) - Formwork for column / wall	8	27-Jun-17 A	07-Jul-17 A																			
11194	MVB Zone B (2/F) - Rebar fixing for column / walls	12	04-Jul-17 A	12-Jul-17 A																			
11196	MVB Zone B (2/F) - Concrete for column / walls	1	13-Jul-17 A	13-Jul-17 A																			
11198	MVB Zone B (2/F) - Scaffolding for beam & slab (VO/098)	2	14-Jul-17 A	15-Jul-17 A																			
11200	MVB Zone B (2/F) - Decking / Formwork for beam & slab (VO/098)	4	17-Jul-17 A	21-Jul-17	-357																		
11202	MVB Zone B (2/F) - Rebar for beam & slab (VO/098)	8	22-Jul-17	31-Jul-17	-357																		
11204	MVB Zone B (2/F) - Close formwork for beam & slab (VO/098)	4	01-Aug-17	04-Aug-17	-357																		
11206	MVB Zone B (2/F) - Concrete beam & slab (GL D-H Roof slab) (VO/098)	1	05-Aug-17	05-Aug-17	-357																		
L2-01 TV Plenum																							
11246	MVB L2-01 - Internal walls / Cast-in items	6	31-Jul-17	05-Aug-17	-310																		
11248	MVB L2-01 - RC curb for SFD	6	07-Aug-17	12-Aug-17	-310																		
11250	MVB L2-01 - Plinth / Crub for silencer	6	07-Aug-17	12-Aug-17	-310																		
L2-02 TV Plenum																							
11252	MVB L2-02 - Internal walls / Cast-in items	6	07-Aug-17	12-Aug-17	-310																		
11254	MVB L2-02 - RC curb for SFD	6	14-Aug-17	19-Aug-17	-310																		
11256	MVB L2-02 - Plinth / Crub for silencer	6	14-Aug-17	19-Aug-17	-310																		
L2-03 TV Plenum																							
11258	MVB L2-03 - Internal walls / Cast-in items	6	14-Aug-17	19-Aug-17	-310																		

- ◆ Current Milestone
- ▬ Level of Effort
- ▲ Baseline Milestone
- ▬ Actual Work
- ▬ Critical Remaining Work
- Remaining Work
- Project Baseline

Leighton Contractors (Asia) Limited Programme Update 40 (June 2017) THREE MONTH ROLLING

Project ID: H2613-U041
Baseline: DWP2d
Layout: Update Three Month Rolling U041
Page 12 of 30

Date	Revision	Checked	Approved
20-May-17	U039	AT	CW
20-Jun-17	U040	AT	CW

CWB(CC) - Commissioning Contract

TASK filters: 3 Months_4, 3MRP, No Original Sections, No Summary, Not HL.

Activity ID	Activity Name	Original Duration	Start	Finish	Total Float	2017			
						Jul	Aug	Sep	Oct
19030	MEP(MVB) - E&M 1st fixing	30	26-Aug-17	29-Sep-17	-335				
19032	MEP(MVB) - E&M 2nd fixing	24	30-Sep-17	31-Oct-17	-335				
Basement 2M (GL D - H)									
TV Plenum									
19036	MEP(MVB) - ABWF Works	12	26-Aug-17	08-Sep-17	-347				
19038	MEP(MVB) - E&M 1st fixing	30	09-Sep-17	16-Oct-17	-347				
19040	MEP(MVB) - E&M 2nd fixing	24	17-Oct-17	14-Nov-17	-347				
Basement 1 (GL D - H)									
General Area & Corridor									
11312	MEP(MVB) - ABWF Works	12	29-Jul-17	11-Aug-17	-323				
11314	MEP(MVB) - E&M 1st fixing	30	12-Aug-17	15-Sep-17	-323				
11316	MEP(MVB) - E&M 2nd fixing	24	16-Sep-17	16-Oct-17	-323				
11318	MEP(MVB) - E&M final fixing	24	17-Oct-17	14-Nov-17	-323				
Basement 1 (GL A - D)									
MCC Room 1 (B1-04)									
11280	MVB - ABWF works for MCC Room 1	12	10-Jul-17 A	26-Jul-17	-345				
11282	MEP(MVB) - E&M 1st fixing	12	27-Jul-17	09-Aug-17	-327				
12346	APS(MVB) - E&M 2nd fixing	12	10-Aug-17	23-Aug-17	-327				
11284	MEP(MVB) - MCC installation	12	24-Aug-17	06-Sep-17	-291				
11286	MEP(MVB) - E&M final fixing	24	07-Sep-17	06-Oct-17	-291				
UPS Room 1 (B1-11)									
11288	MVB - ABWF works for UPS Room	12	27-Jul-17	09-Aug-17	-345				
11290	MEP(MVB) - E&M 1st fixing	12	10-Aug-17	23-Aug-17	-345				
12348	MEP(MVB) - E&M 2nd fixing	12	24-Aug-17	06-Sep-17	-345				
11292	MEP(MVB) - UPS installation	12	07-Sep-17	20-Sep-17	-303				
11294	MEP(MVB) - E&M final fixing	24	21-Sep-17	20-Oct-17	-303				
MCC Room 2 (B1-07)									
11304	MVB - ABWF works for MCC Room 2	12	10-Aug-17	23-Aug-17	-345				
11306	MEP(MVB) - E&M 1st fixing	12	24-Aug-17	06-Sep-17	-345				
12350	MEP(MVB) - E&M 2nd fixing	12	07-Sep-17	20-Sep-17	-345				
11308	MEP(MVB) - MCC installation	12	21-Sep-17	06-Oct-17	-315				
11310	MEP(MVB) - E&M final fixing	24	07-Oct-17	04-Nov-17	-315				
Computer Equipment Room (B1-09)									

- Current Milestone
- Level of Effort
- Baseline Milestone
- Actual Work
- Critical Remaining Work
- Remaining Work
- Project Baseline

Leighton Contractors (Asia) Limited Programme Update 40 (June 2017) THREE MONTH ROLLING

Project ID: H2613-U041
Baseline: DWP2d
Layout: Update Three Month Rolling U041
Page 14 of 30

Date	Revision	Checked	Approved
20-May-17	U039	AT	CW
20-Jun-17	U040	AT	CW

CWB(CC) - Commissioning Contract

TASK filters: 3 Months_4, 3MRP, No Original Sections, No Summary, Not HL.

Activity ID	Activity Name	Original Duration	Start	Finish	Total Float	2017			
						Jul	Aug	Sep	Oct
12742	MVB - ABWF works for Computer Equipment Room	12	24-Aug-17	06-Sep-17	-345				
12744	MEP(MVB) - E&M 1st fixing	12	07-Sep-17	20-Sep-17	-345				
12750	MEP(MVB) - E&M 2nd fixing	12	21-Sep-17	06-Oct-17	-345				
12746	MEP(MVB) - Computer equipment	12	07-Oct-17	20-Oct-17	-327				
LV Switch Room (B1-05)									
11320	MVB - ABWF works for LV Switch Rooms	12	20-Jul-17	02-Aug-17	-339				
11324	MEP(MVB) - E&M 1st fixing	30	03-Aug-17	06-Sep-17	-339				
12352	MEP(MVB) - E&M 2nd fixing	24	07-Sep-17	06-Oct-17	-339				
11326	MEP(MVB) - Installation of LV Switchboard & LCC	30	07-Oct-17	11-Nov-17	-339				
General Area & Corridor									
11296	MEP(MVB) - ABWF Works	12	07-Sep-17	20-Sep-17	-345				
11298	MEP(MVB) - E&M 1st fixing	24	21-Sep-17	20-Oct-17	-345				
11300	MEP(MVB) - E&M 2nd fixing	24	07-Oct-17	04-Nov-17	-345				
G/F (GLD - H)									
TVF Fan Room 1 (G-01)									
11390	MEP(MVB) - ABWF Works	12	03-Aug-17	16-Aug-17	-372				
11392	MEP(MVB) - E&M 1st fixing	12	17-Aug-17	30-Aug-17	-303				
12364	MEP(MVB) - E&M 2nd fixing	12	31-Aug-17	13-Sep-17	-303				
11394	MEP(MVB) - Installation of TVF & Silencer	18	14-Sep-17	06-Oct-17	-303				
11396	MEP(MVB) - E&M final fixing	12	07-Oct-17	20-Oct-17	-303				
TVF Fan Room 2 (G-02)									
11398	MEP(MVB) - ABWF Works	12	20-Jul-17	02-Aug-17	-372				
11400	MEP(MVB) - E&M 1st fixing	12	03-Aug-17	16-Aug-17	-309				
12366	MEP(MVB) - E&M 2nd fixing	12	17-Aug-17	30-Aug-17	-309				
11402	MEP(MVB) - Installation of TVF & Silencer	24	31-Aug-17	27-Sep-17	-309				
11404	MEP(MVB) - E&M final fixing	24	28-Sep-17	27-Oct-17	-309				
General Area & Corridor									
11406	MEP(MVB) - ABWF Works	6	17-Aug-17	23-Aug-17	-372				
11408	MEP(MVB) - E&M 1st fixing	24	24-Aug-17	20-Sep-17	-309				
11410	MEP(MVB) - E&M 2nd fixing	30	04-Sep-17	10-Oct-17	-309				
11412	MEP(MVB) - E&M final fixing	24	28-Sep-17	27-Oct-17	-309				
G/F (GLA - D)									
HKE / HV Switch Room 1 (G-07)									

- Current Milestone
- Level of Effort
- Baseline Milestone
- Actual Work
- Critical Remaining Work
- Remaining Work
- Project Baseline

Leighton Contractors (Asia) Limited Programme Update 40 (June 2017) THREE MONTH ROLLING

Project ID: H2613-U041
Baseline: DWP2d
Layout: Update Three Month Rolling U041
Page 15 of 30

Date	Revision	Checked	Approved
20-May-17	U039	AT	CW
20-Jun-17	U040	AT	CW

CWB(CC) - Commissioning Contract

TASK filters: 3 Months_4, 3MRP, No Original Sections, No Summary, Not HL.

Activity ID	Activity Name	Original Duration	Start	Finish	Total Float	2017			
						Jul	Aug	Sep	Oct
11384	MEP(MVB) - E&M 1st fixing	24	21-Sep-17	20-Oct-17	-327				
11386	MEP(MVB) - E&M 2nd fixing	24	07-Oct-17	04-Nov-17	-327				
1/F (GL D - H)									
General Area & Corridor									
11440	MEP(MVB) - ABWF Works	6	24-Aug-17	30-Aug-17	-372				
11442	MEP(MVB) - E&M 1st fixing	24	31-Aug-17	27-Sep-17	-372				
11444	MEP(MVB) - E&M 2nd fixing	24	28-Sep-17	27-Oct-17	-372				
1/F (GL A - D)									
FS Water Tank & Pump Room (L1-05)									
11414	MEP(MVB) - ABWF Works	12	07-Sep-17	20-Sep-17	-355				
11416	MEP(MVB) - E&M 1st fixing	12	21-Sep-17	06-Oct-17	-345				
12368	MEP(MVB) - E&M 2nd fixing	12	07-Oct-17	20-Oct-17	-345				
Emergency Generator Room (L1-03)									
11422	MEP(MVB) - ABWF Works	6	31-Aug-17	06-Sep-17	-355				
11424	MEP(MVB) - E&M 1st fixing	6	07-Sep-17	13-Sep-17	-345				
12370	MEP(MVB) - E&M 2nd fixing	6	14-Sep-17	20-Sep-17	-345				
11426	MEP(MVB) - Installation of Emergency Generator System	36	21-Sep-17	04-Nov-17	-345				
General Area & Corridor									
11432	MEP(MVB) - ABWF Works	12	21-Sep-17	06-Oct-17	-355				
11434	MEP(MVB) - E&M 1st fixing	24	07-Oct-17	04-Nov-17	-339				
2/F (GL D - H)									
TV Plenum (L2-01)									
11448	MEP(MVB) - ABWF Works	6	07-Oct-17	13-Oct-17	-355				
11450	MEP(MVB) - E&M 1st fixing	12	14-Oct-17	27-Oct-17	-355				
TV Plenum (L2-02)									
11458	MEP(MVB) - ABWF Works	6	14-Oct-17	20-Oct-17	-355				
TV Plenum (L2-05)									
11488	MEP(MVB) - ABWF Works	6	07-Oct-17	13-Oct-17	-349				
11490	MEP(MVB) - E&M 1st fixing	12	14-Oct-17	27-Oct-17	-343				
General Area & Corridor									
11498	MEP(MVB) - ABWF Works	12	14-Oct-17	27-Oct-17	-349				
E&M Testing & Commissioning / Statutory Inspection									
12578a	MEP(MVB) - Genset submission comment from AECOM	24	27-Jul-17	23-Aug-17	-345				

- Current Milestone
- Level of Effort
- Baseline Milestone
- Actual Work
- Critical Remaining Work
- Remaining Work
- Project Baseline

Leighton Contractors (Asia) Limited Programme Update 40 (June 2017) THREE MONTH ROLLING

Project ID: H2613-U041
Baseline: DWP2d
Layout: Update Three Month Rolling U041
Page 17 of 30

Date	Revision	Checked	Approved
20-May-17	U039	AT	CW
20-Jun-17	U040	AT	CW

CWB(CC) - Commissioning Contract

TASK filters: 3 Months_4, 3MRP, No Original Sections, No Summary, Not HL.

Activity ID	Activity Name	Original Duration	Start	Finish	Total Float	2017			
						Jul	Aug	Sep	Oct
12578b	MEP(MVB) - Genset re-submission and approval	24	24-Aug-17	20-Sep-17	-345				
12570	MEP(MVB) - Submission of WWO46 (Part I, II) to WSD	0	07-Sep-17		-407				
12578	MEP(MVB) - Genset submission to EPD	0	21-Sep-17		-426				
12600	MEP(MVB) - DG submission to FSD	0	21-Sep-17		-426				
Portion IVa Road Surface Area									
19044	Access date for Portion IVa Road Surface Area (C3 Interface Contractor)	0	20-Jul-17*		-360				
19046	TCSS equipment installation & cabling (Tentative)	96	20-Jul-17	11-Nov-17	-360				
19050	Lighting equipment installation & cabling (Tentative)	48	20-Jul-17	13-Sep-17	-125				
19052	Lighting equipment Testing & Commissioning (Tentative)	24	14-Sep-17	13-Oct-17	-125				
Satellite Control Point 3									
C1 Hammer Head (VO) - RFV issued and pending for reply									
3781	C1 Hammer Head - Initial Site Survey	5	04-Jul-17 A	08-Jul-17 A					
3783	C1 Hammer Head - Trial pit	5	06-Jul-17 A	11-Jul-17 A					
C1 Hammer Head (Western)									
3785	C1 Hammer Head (Western) - Excavation / Drawpit / Ducts Laying	17	12-Jul-17 A	31-Jul-17	-100				
3789	C1 Hammer Head (Western) - Concreting	1	01-Aug-17	01-Aug-17	-100				
3791	C1 Hammer Head (Western) - Formwork dismantle and backfilling	2	02-Aug-17	03-Aug-17	-100				
C1 Hammer Head (Eastern)									
3787	C1 Hammer Head (Eastern) - Excavation / Drawpit / Ducts Laying	11	17-Jul-17 A	28-Jul-17	-98				
3793	C1 Hammer Head (Western) - Concreting	1	29-Jul-17	29-Jul-17	-98				
3795	C1 Hammer Head (Eastern) - Formwork dismantle and backfilling	2	31-Jul-17	01-Aug-17	-98				
SCP3									
3750	SCP3 - Possession of Portion Vb2	0	03-Jul-17 A						
3752	SCP3 - Initial Site Survey	6	04-Jul-17 A	08-Jul-17 A					
3754	SCP3 - Erect Hoarding	6	10-Jul-17 A	12-Jul-17 A					
3756	SCP3 - Mobilisation and setup	12	13-Jul-17 A	15-Jul-17 A					
3758	SCP3 - Construct SCP RC Structures	39	17-Jul-17 A	28-Aug-17	-403				
3772	SCP3 - External Works	30	22-Aug-17	25-Sep-17	-403				
3760	SCP3 - ABWF Works	24	29-Aug-17	25-Sep-17	-403				
3762	MEP(SCP3) - E&M 1st Fix	18	26-Sep-17	18-Oct-17	-403				
3764	MEP(SCP3) - E&M 2nd Fix	18	10-Oct-17	31-Oct-17	-393				
10110	MEP(SCP3) - TCSS Enabling Works	18	19-Oct-17	09-Nov-17	-403				
East Ventilation Building (EVb - related)									

- ◆ Current Milestone
- ▬ Level of Effort
- ▲ Baseline Milestone
- ▬ Actual Work
- ▬ Critical Remaining Work
- Remaining Work
- Project Baseline

Leighton Contractors (Asia) Limited Programme Update 40 (June 2017) THREE MONTH ROLLING

Project ID: H2613-U041
Baseline: DWP2d
Layout: Update Three Month Rolling U041
Page 18 of 30

Date	Revision	Checked	Approved
20-May-17	U039	AT	CW
20-Jun-17	U040	AT	CW

CWB(CC) - Commissioning Contract

TASK filters: 3 Months_4, 3MRP, No Original Sections, No Summary, Not HL.

Activity ID	Activity Name	Original Duration	Start	Finish	Total Float	2017											
						Jul	Aug	Sep	Oct	Nov	Dec	Jan	Feb	Mar	Apr	May	Jun
Tunnel Section (EVB-related)																	
Portion VIc [CH3770 to CH3800]																	
Westbound																	
5200c2	MEP(WB) - (CH3770 to CH3800) Niche installation	2	11-Oct-17	12-Oct-17	-560												
Eastbound																	
5214c	MEP(EB) - (CH3770 to CH3800) E&M 1st Fix	6	14-Apr-17 A	24-Jul-17	-360												
5220c	MEP(EB) - (CH3770 to CH3800) E&M 2nd Fix	12	27-Apr-17 A	31-Jul-17	-321												
9964c1	MEP(EB) - (CH3770 to CH3800) VE Panel installation (Lower part) (450m2) - 1 team	5	15-May-17 A	24-Jul-17	-173												
5216c	MEP(EB) - (CH3770 to CH3800) TCSS Field equip & cable installation - 1 Team	5	16-Aug-17	21-Aug-17	-379												
5218c2	MEP(EB) - (CH3770 to CH3800) Niche installation	2	13-Oct-17	14-Oct-17	-560												
Portion VII [CH3825 to CH4250] - Original Section in DWP Rev.2a																	
5238	Possession of Portion VII	0	20-Jul-17		343												
Portion VII [CH3800 to CH3911]																	
Westbound																	
5228a4	MEP(WB) - (CH3800 to CH3911) E&M 1st Fix	18	15-Mar-17 A	30-Jun-17 A													
9966a4a	MEP(WB) - (CH3800 to CH3911) VE Panel installation (Lower part) (1332m2) - 1 team	15	04-Jul-17 A	27-Jul-17	-318												
5234a4	MEP(WB) - (CH3800 to CH3911) TCSS Field equip & cable installation - 1 Team	12	02-Aug-17	15-Aug-17	-379												
5230a4	MEP(WB) - (CH3800 to CH3911) E&M 2nd Fix	48	19-Sep-17	16-Nov-17	-417												
Eastbound																	
5246a4	MEP(EB) - (CH3800 to CH3911) E&M 1st Fix	18	23-Feb-17 A	25-Jul-17	-373												
5248a4	MEP(EB) - (CH3800 to CH3911) E&M 2nd Fix (include Sump II)	12	15-Mar-17 A	01-Aug-17	-379												
5252a4	MEP(EB) - (CH3800 to CH3911) TCSS Field equip & cable installation - 1 Team	12	17-Mar-17 A	01-Aug-17	-379												
5258a2a	Vlc(EB) - Masking wall construction (VO/142) (CH3800-3911) (111m, 1.5m/day) - 2 teams	37	08-Jun-17 A	02-Aug-17	-636												
9968a4a	MEP(EB) - (CH3800 to CH3911) VE Panel installation (Lower part) (1332m2) - 1 team	15	12-Aug-17	29-Aug-17	-361												
Portion VII [CH3911 to CH4250]																	
Access Shaft Opening																	
10118a1	VII(WB) - Setting out & Setup	6	20-Jul-17	26-Jul-17	-417												
10118a2	VII(WB) - Design / Procurement / Delivery of materials for scaffold, formwork, rebar fixing, etc.	18	27-Jul-17	16-Aug-17	-417												
10118a3	VII(WB) - Scaffolding for OHVD	18	17-Aug-17	06-Sep-17	-417												
10118a4	VII(WB) - Decking for OHVD	12	07-Sep-17	20-Sep-17	-417												
10118a5	VII(WB) - Formworking & Rebar fixing for OHVD	24	21-Sep-17	20-Oct-17	-417												
Westbound																	
5228a2	MEP(WB) - (CH3911 to CH4250) E&M 1st Fix	25	14-Mar-17 A	02-Aug-17	-335												

- Current Milestone
- Level of Effort
- Baseline Milestone
- Actual Work
- Critical Remaining Work
- Remaining Work
- Project Baseline

Leighton Contractors (Asia) Limited
Programme Update 40 (June 2017)
THREE MONTH ROLLING

Project ID: H2613-U041
 Baseline: DWP2d
 Layout: Update Three Month Rolling U041
 Page 19 of 30

Date	Revision	Checked	Approved
20-May-17	U039	AT	CW
20-Jun-17	U040	AT	CW

CWB(CC) - Commissioning Contract

TASK filters: 3 Months_4, 3MRP, No Original Sections, No Summary, Not HL.

Activity ID	Activity Name	Original Duration	Start	Finish	Total Float	2017			
						Jul	Aug	Sep	Oct
5234a2	MEP(WB) - (CH3911 to CH4250) TCSS Field equip & cable installation - 1 Team	15	15-Mar-17 A	03-Aug-17	-277	[Gantt bar: 15-Mar-17 to 03-Aug-17]			
9966a2a	MEP(WB) - (CH3911 to CH4250) VE Panel installation (Lower part) (4068m2) - 2 team	23	05-Jul-17 A	02-Aug-17	-253	[Gantt bar: 05-Jul-17 to 02-Aug-17]			
5230a2	MEP(WB) - (CH3911 to CH4250) E&M 2nd Fix	53	03-Aug-17	04-Oct-17	-335	[Gantt bar: 03-Aug-17 to 04-Oct-17]			
Eastbound									
5246a2	MEP(EB) - (CH3911 to CH4250) E&M 1st Fix	25	22-Mar-17 A	09-Aug-17	-399	[Gantt bar: 22-Mar-17 to 09-Aug-17]			
9968a2a	MEP(EB) - (CH3911 to CH4250) VE Panel installation (Lower part) (4086m2) - 2 team	23	17-May-17 A	09-Aug-17	-282	[Gantt bar: 17-May-17 to 09-Aug-17]			
5258a1	VII(EB) - Masking wall construction (VO/142) (CH3911-3980) (69m, 1.5m/day) - 2 teams	23	10-Aug-17	05-Sep-17	-399	[Gantt bar: 10-Aug-17 to 05-Sep-17]			
5248a2	MEP(EB) - (CH3911 to CH4250) E&M 2nd Fix (include Sump II)	53	06-Sep-17	09-Nov-17	-397	[Gantt bar: 06-Sep-17 to 09-Nov-17]			
Slip Road 8									
13084a1	MEP(SR8) - (CH1000 to CH750) VE Panel installation (Lower part) (550m2) - 1 team	6	27-Jun-17 A	24-Jul-17	-367	[Gantt bar: 27-Jun-17 to 24-Jul-17]			
13080a1	VII (SR8) - Masking wall construction (VO/142) (CH851-750/851-750) (202m, 1.5m/day) - 2 teams	67	06-Sep-17	25-Nov-17	-399	[Gantt bar: 06-Sep-17 to 25-Nov-17]			
Portion VIIIa [CH4250 to CH4600]									
Westbound									
5290	VIIIa(WB) - Thermal Barrier installation (include protection removal) - 3 team	39	17-Aug-17	30-Sep-17	-330	[Gantt bar: 17-Aug-17 to 30-Sep-17]			
5290a	VIIIa(WB) - Concrete plinth construction	30	03-Oct-17	08-Nov-17	-321	[Gantt bar: 03-Oct-17 to 08-Nov-17]			
Eastbound									
5276	VIIIa(EB) - Thermal Barrier installation (include protection removal) - 3 team	39	02-Jun-17 A	16-Aug-17	-330	[Gantt bar: 02-Jun-17 to 16-Aug-17]			
5276a	VIIIa(EB) - Concrete plinth construction	30	17-Aug-17	20-Sep-17	-312	[Gantt bar: 17-Aug-17 to 20-Sep-17]			
5260	MEP(EB) - (CH4250 to CH4600) E&M 1st Fix	19	21-Sep-17	14-Oct-17	-292	[Gantt bar: 21-Sep-17 to 14-Oct-17]			
5262	MEP(EB) - (CH4250 to CH4600) E&M 2nd Fix	19	27-Sep-17	20-Oct-17	-292	[Gantt bar: 27-Sep-17 to 20-Oct-17]			
Slip Road 8									
13060a	VIIIa(SR8) - Interface contractor remedial works (tentative handover)	82	13-Mar-17 A	09-Aug-17	-606	[Gantt bar: 13-Mar-17 to 09-Aug-17]			
13060	VIIIa(SR8) - Mobilisation & Setup	6	10-Aug-17	16-Aug-17	-606	[Gantt bar: 10-Aug-17 to 16-Aug-17]			
13064	VIIIa(SR8) - Anchorage installation for subsequent E&M 1st Fix and VE Panel frame support (include protection) (1500m2)	8	17-Aug-17	25-Aug-17	-606	[Gantt bar: 17-Aug-17 to 25-Aug-17]			
13062	VIIIa(SR8) - Thermal Barrier installation (include protection removal) - 2 team	42	26-Aug-17	16-Oct-17	-606	[Gantt bar: 26-Aug-17 to 16-Oct-17]			
Portion IXd [CH4600 to CH4860]									
Westbound									
5292	MEP(WB) - (CH4600 to CH4860) E&M 1st Fix	14	05-Jun-17 A	31-Jul-17	-364	[Gantt bar: 05-Jun-17 to 31-Jul-17]			
9974a	MEP(WB) - (CH4600 to CH4860) VE Panel installation (Lower part) (3300m2) - 1 team	37	06-Sep-17	20-Oct-17	-367	[Gantt bar: 06-Sep-17 to 20-Oct-17]			
5308a1	IXd(WB) - Masking wall construction (VO/142) (CH4646-4785) (139m, 1.5m/day) - 2 teams	46	26-Sep-17	21-Nov-17	-636	[Gantt bar: 26-Sep-17 to 21-Nov-17]			
Eastbound									
9976a	MEP(EB) - (CH4600 to CH4860) VE Panel installation (Lower part) (3300m2) - 1 team	37	25-Jul-17	05-Sep-17	-367	[Gantt bar: 25-Jul-17 to 05-Sep-17]			
5322a1	IXd(EB) - Masking wall construction (VO/142) (CH4656-4795) (139m, 1.5m/day) - 2 teams	46	03-Aug-17	25-Sep-17	-636	[Gantt bar: 03-Aug-17 to 25-Sep-17]			

- Current Milestone
- Level of Effort
- Baseline Milestone
- Actual Work
- Critical Remaining Work
- Remaining Work
- Project Baseline

Leighton Contractors (Asia) Limited Programme Update 40 (June 2017) THREE MONTH ROLLING

Project ID: H2613-U041
Baseline: DWP2d
Layout: Update Three Month Rolling U041
Page 20 of 30

Date	Revision	Checked	Approved
20-May-17	U039	AT	CW
20-Jun-17	U040	AT	CW

CWB(CC) - Commissioning Contract

TASK filters: 3 Months_4, 3MRP, No Original Sections, No Summary, Not HL.

Activity ID	Activity Name	Original Duration	Start	Finish	Total Float	2017			
						Jul	Aug	Sep	Oct
9976	MEP(EB) - (CH4600 to CH4860) VE Panel installation (Upper part) (3300m2) - 1 team	37	08-Aug-17	19-Sep-17	-361				
5312	MEP(EB) - (CH4600 to CH4860) E&M 2nd Fix	29	10-Oct-17	13-Nov-17	-423				
Portion IXa [CH4860 to CH5150]									
Westbound									
5324	MEP(WB) - (CH4860 to CH5150) E&M 1st Fix	16	05-May-17 A	26-Jul-17	-358				
5326	MEP(WB) - (CH4860 to CH5150) E&M 2nd Fix (include Sump E)	32	22-May-17 A	02-Aug-17	-364				
9978a	MEP(WB) - (CH4860 to CH5150) VE Panel installation (Lower part) (3288m2) - 1 team	37	07-Jun-17 A	11-Aug-17	-266				
Eastbound									
5354a	MEP(EB) - (CH4860 to CH5150) Concrete Plinth construction	21	13-Mar-17 A	29-Jul-17	-384				
5342	MEP(EB) - (CH4860 to CH5150) E&M 1st Fix	16	13-Jun-17 A	04-Aug-17	-389				
9980a	MEP(EB) - (CH4860 to CH5150) VE Panel installation (Lower part) (3288m2) - 1 team	37	31-Jul-17	11-Sep-17	-255				
5344	MEP(EB) - (CH4860 to CH5150) E&M 2nd Fix (include Sump E)	32	05-Aug-17	11-Sep-17	-389				
Portion VIIIb [SR8 CH500 to CH350]									
5368	VIIIb - Initial Site Survey	12	13-Mar-17 A	31-Jul-17	-392				
Slip Road 8									
5370	VIIIb(SR8) - Mobilisation & Setup	6	26-Aug-17	01-Sep-17	-414				
12258	VIIIb(SR8) - Anchorage installation for subsequent E&M 1st Fix and VE Panel frame support (include protection) (1500m2)	8	02-Sep-17	11-Sep-17	-414				
5372	VIIIb(SR8) - Thermal Barrier installation (include protection removal) - 2 team	25	12-Sep-17	12-Oct-17	-414				
5356a	MEP(SR8) - (CH500 to CH350) E&M 1st Fix	12	13-Oct-17	26-Oct-17	-400				
Portion VIIIc [SR8 CH350 to CH210]									
5386	VIIIc - Initial Site Survey	6	13-Mar-17 A	25-Jul-17	-343				
Slip Road 8									
5388	VIIIc(SR8) - Mobilisation & Setup	6	13-Oct-17	19-Oct-17	-409				
East Ventilation Building (EVB)									
RC Structures and Green Roof									
3426	EVB - Waterproofing @ Roof	30	01-May-17 A	29-Jul-17	-350				
External Facade									
3438	EVB - External facing tiles / Louvre	90	31-Jul-17	15-Nov-17	-332				
MEP & ABWF Works									
3480	MEP(EVB) - Lift Installation	90	30-Jul-17	27-Oct-17	-433				
Basement 2 - APS Auxiliary Room / APS Plant Area 1 / APS Plant Area 2 / APS Plant Area 3									
3556	APS(EVB) - ABWF works	12	11-May-17 A	22-Jun-17 A					
12292	APS(EVB) - E&M 1st fixing	24	24-May-17 A	02-Aug-17	-391				

- Current Milestone
- Level of Effort
- Baseline Milestone
- Actual Work
- Critical Remaining Work
- Remaining Work
- Project Baseline

Leighton Contractors (Asia) Limited Programme Update 40 (June 2017) THREE MONTH ROLLING

Project ID: H2613-U041
Baseline: DWP2d
Layout: Update Three Month Rolling U041
Page 21 of 30

Date	Revision	Checked	Approved
20-May-17	U039	AT	CW
20-Jun-17	U040	AT	CW

CWB(CC) - Commissioning Contract

TASK filters: 3 Months_4, 3MRP, No Original Sections, No Summary, Not HL.

Activity ID	Activity Name	Original Duration	Start	Finish	Total Float	2017			
						Jul	Aug	Sep	Oct
12382	APS(EVB) - E&M 2nd fixing	24	03-Aug-17	30-Aug-17	-370				
12296	APS(EVB) - Installation of MV fans	30	31-Aug-17	06-Oct-17	-296				
12298	APS(EVB) - Installation of electrical services	24	07-Oct-17	04-Nov-17	-296				
Basement 2 - Sump Pump Room (B2-12)									
11590	EVB - ABWF works for Sump Pump Room	12	05-May-17 A	28-Jul-17	-387				
11592	MEP(EVB) - E&M 1st fixing	12	03-Aug-17	16-Aug-17	-391				
12384	MEP(EVB) - E&M 2nd fixing	12	31-Aug-17	13-Sep-17	-370				
11594	MEP(EVB) - Sump Pump installation	12	14-Sep-17	27-Sep-17	-331				
11596	MEP(EVB) - E&M final fixing	24	28-Sep-17	27-Oct-17	-331				
Basement 2 - General Area & Corridor									
11598	MEP(EVB) - ABWF Works	12	16-May-17 A	01-Aug-17	-378				
11600	MEP(EVB) - E&M 1st fixing	45	17-Aug-17	10-Oct-17	-391				
11602	MEP(EVB) - E&M 2nd fixing	45	11-Oct-17	02-Dec-17	-391				
Basement 1 Mezzanine (GLA - D)									
Electrical Duct Shaft (B1M-05)									
12954	MEP(EVB) - ABWF Works	12	17-Aug-17	30-Aug-17	-391				
12956	MEP(EVB) - E&M 1st fixing	12	31-Aug-17	13-Sep-17	-355				
12958	MEP(EVB) - E&M 2nd fixing	12	14-Sep-17	27-Sep-17	-355				
12960	MEP(EVB) - E&M final fixing	12	28-Sep-17	13-Oct-17	-355				
Fireman's Lift Lobby (B1M-06)									
12962	MEP(EVB) - ABWF Works	12	31-Aug-17	13-Sep-17	-391				
12964	MEP(EVB) - E&M 1st fixing	12	14-Sep-17	27-Sep-17	-355				
12966	MEP(EVB) - E&M 2nd fixing	12	28-Sep-17	13-Oct-17	-355				
12968	MEP(EVB) - E&M final fixing	24	14-Oct-17	11-Nov-17	-355				
Lobby (B1M-07)									
12970	MEP(EVB) - ABWF Works	12	14-Sep-17	27-Sep-17	-391				
12972	MEP(EVB) - E&M 1st fixing	12	28-Sep-17	13-Oct-17	-355				
12974	MEP(EVB) - E&M 2nd fixing	12	14-Oct-17	27-Oct-17	-355				
Electrical Duct (B1M-08)									
12978	MEP(EVB) - ABWF Works	12	28-Sep-17	13-Oct-17	-391				
12980	MEP(EVB) - E&M 1st fixing	12	14-Oct-17	27-Oct-17	-355				
Basement 1 Mezzanine (GL D - L)									
Plenum (B1M-03)									

- Current Milestone
- Level of Effort
- Baseline Milestone
- Actual Work
- Critical Remaining Work
- Remaining Work
- Project Baseline

Leighton Contractors (Asia) Limited Programme Update 40 (June 2017) THREE MONTH ROLLING

Project ID: H2613-U041
Baseline: DWP2d
Layout: Update Three Month Rolling U041
Page 22 of 30

Date	Revision	Checked	Approved
20-May-17	U039	AT	CW
20-Jun-17	U040	AT	CW

CWB(CC) - Commissioning Contract

TASK filters: 3 Months_4, 3MRP, No Original Sections, No Summary, Not HL.

Activity ID	Activity Name	Original Duration	Start	Finish	Total Float	2017			
						Jul	Aug	Sep	Oct
11648	MEP(EVB) - E&M 1st fixing	12	20-Jul-17	02-Aug-17	-358				
12394	MEP(EVB) - E&M 2nd fixing	12	03-Aug-17	16-Aug-17	-319				
11650	MEP(EVB) - Installation of FS Pump	24	17-Aug-17	13-Sep-17	-319				
11652	MEP(EVB) - E&M final fixing	24	14-Sep-17	13-Oct-17	-319				
Computer Equipment Room (B1-09)									
12752	MEP(EVB) - ABWF Works	12	03-Aug-17	16-Aug-17	-370				
12754	MEP(EVB) - E&M 1st fixing	12	17-Aug-17	30-Aug-17	-370				
12762	MEP(EVB) - E&M 2nd fixing	12	31-Aug-17	13-Sep-17	-370				
12756	MEP(EVB) - Computer Equipment Installation	12	14-Sep-17	27-Sep-17	-321				
12760	MEP(EVB) - E&M Final fixing	14	28-Sep-17	16-Oct-17	-321				
UPS & Battery Room (B1-10, B1-11)									
11664	MEP(EVB) - E&M 1st fixing	24	20-Jul-17	16-Aug-17	-375				
12396	MEP(EVB) - E&M 2nd fixing	30	17-Aug-17	20-Sep-17	-375				
11666	MEP(EVB) - Installation of UPS System	30	21-Sep-17	27-Oct-17	-375				
General Area & Corridor									
11672	MEP(EVB) - ABWF Works	12	20-Jul-17	02-Aug-17	-370				
11674	MEP(EVB) - E&M 1st fixing	24	17-Aug-17	13-Sep-17	-370				
11676	MEP(EVB) - E&M 2nd fixing	45	14-Sep-17	08-Nov-17	-370				
G/F (GLA - D)									
Emergency Generator Room (G-04)									
11682	MEP(EVB) - E&M 1st fixing	30	31-May-17 A	25-Jul-17	-366				
12398	MEP(EVB) - E&M 2nd fixing	30	29-Aug-17	03-Oct-17	-395				
11684	MEP(EVB) - Installation of Emergency Generator System	45	04-Oct-17	27-Nov-17	-386				
Transformer Room 1 (G-06)									
11690	MEP(EVB) - ABWF Works	20	18-Apr-17 A	29-Jul-17	-432				
11692	MEP(EVB) - E&M 1st fixing	24	12-Jun-17 A	31-Jul-17	-433				
12400	MEP(EVB) - E&M 2nd fixing	24	01-Aug-17	28-Aug-17	-433				
11694	MEP(EVB) - Installation of HV switchboard & transformer	45	29-Aug-17	21-Oct-17	-433				
Transformer Room 2 (G-03)									
11700	MEP(EVB) - ABWF Works	12	19-Apr-17 A	30-Jun-17 A					
11702	MEP(EVB) - E&M 1st fixing	24	03-Jul-17 A	02-Aug-17	-390				
12402	MEP(EVB) - E&M 2nd fixing	24	29-Aug-17	25-Sep-17	-412				
HKE / HV Switch Room 1 & 2 (G-10 & G-07)									

- ◆ Current Milestone
- ▬ Level of Effort
- ▲ Baseline Milestone
- ▬ Actual Work
- ▬ Critical Remaining Work
- ▬ Remaining Work
- ▬ Project Baseline

Leighton Contractors (Asia) Limited Programme Update 40 (June 2017) THREE MONTH ROLLING

Project ID: H2613-U041
Baseline: DWP2d
Layout: Update Three Month Rolling U041
Page 24 of 30

Date	Revision	Checked	Approved
20-May-17	U039	AT	CW
20-Jun-17	U040	AT	CW

CWB(CC) - Commissioning Contract

TASK filters: 3 Months_4, 3MRP, No Original Sections, No Summary, Not HL.

Activity ID	Activity Name	Original Duration	Start	Finish	Total Float	2017			
						Jul	Aug	Sep	Oct
11720	MEP(EVB) - E&M 1st fixing	24	11-Jul-17 A	09-Aug-17	-393	[Gantt bar: Jul 11-17 to Aug 09-17]			
12404	MEP(EVB) - E&M 2nd fixing	24	10-Aug-17	06-Sep-17	-393	[Gantt bar: Aug 10-17 to Sep 06-17]			
11722	MEP(EVB) - HKE inspection	14	07-Sep-17	22-Sep-17	-369	[Gantt bar: Sep 07-17 to Sep 22-17]			
11714	MEP(EVB) - Handover HKE/HV Switch Rooms	0	23-Sep-17		-369	[Milestone: Sep 23-17]			
11716	MEP(EVB) - HKE HV Switch Rooms installation	48	23-Sep-17	21-Nov-17	-369	[Gantt bar: Sep 23-17 to Nov 21-17]			
Fire Control Centre (G-02)									
11724	MEP(EVB) - ABWF Works	12	04-May-17 A	14-Jul-17 A		[Gantt bar: May 04-17 to Jul 14-17]			
11726	MEP(EVB) - E&M 1st fixing	12	17-Jul-17 A	31-Jul-17	-317	[Gantt bar: Jul 17-17 to Jul 31-17]			
12406	MEP(EVB) - E&M 2nd fixing	12	01-Aug-17	14-Aug-17	-317	[Gantt bar: Aug 01-17 to Aug 14-17]			
11728	MEP(EVB) - Installation of FS Control Panel	24	19-Aug-17	15-Sep-17	-321	[Gantt bar: Aug 19-17 to Sep 15-17]			
11730	MEP(EVB) - E&M final fixing	24	16-Sep-17	16-Oct-17	-321	[Gantt bar: Sep 16-17 to Oct 16-17]			
General Area & Corridor									
11732	MEP(EVB) - ABWF Works	12	18-Jul-17 A	31-Jul-17	-391	[Gantt bar: Jul 18-17 to Jul 31-17]			
11734	MEP(EVB) - E&M 1st fixing	30	01-Aug-17	04-Sep-17	-391	[Gantt bar: Aug 01-17 to Sep 04-17]			
11736	MEP(EVB) - E&M 2nd fixing	30	07-Sep-17	13-Oct-17	-393	[Gantt bar: Sep 07-17 to Oct 13-17]			
11738	MEP(EVB) - E&M final fixing	30	14-Oct-17	18-Nov-17	-349	[Gantt bar: Oct 14-17 to Nov 18-17]			
1/F (GLA - D)									
LV Switch Room (L1-08)									
11756	EVB - ABWF works for LV Switch Rooms	12	25-Mar-17 A	07-Jul-17 A		[Gantt bar: Mar 25-17 to Jul 07-17]			
11760	MEP(EVB) - E&M 1st fixing	30	10-Jul-17 A	16-Aug-17	-345	[Gantt bar: Jul 10-17 to Aug 16-17]			
12408	MEP(EVB) - E&M 2nd fixing	30	14-Oct-17	18-Nov-17	-393	[Gantt bar: Oct 14-17 to Nov 18-17]			
MCC Room 1 (L1-05)									
11792	MEP(EVB) - E&M 1st fixing	12	21-Jun-17 A	31-Jul-17	-341	[Gantt bar: Jun 21-17 to Jul 31-17]			
12410	MEP(EVB) - E&M 2nd fixing	12	04-Oct-17	18-Oct-17	-395	[Gantt bar: Oct 04-17 to Oct 18-17]			
11794	MEP(EVB) - MCC installation	12	19-Oct-17	02-Nov-17	-359	[Gantt bar: Oct 19-17 to Nov 02-17]			
MCC Room 2 (L1-09)									
11800	MEP(EVB) - E&M 1st fixing	12	06-Jun-17 A	31-Jul-17	-344	[Gantt bar: Jun 06-17 to Jul 31-17]			
12412	MEP(EVB) - E&M 2nd fixing	12	19-Oct-17	02-Nov-17	-395	[Gantt bar: Oct 19-17 to Nov 02-17]			
Irrigation Water Tank & Pump Room (L1-02)									
11766	MEP(EVB) - E&M 1st fixing	12	01-Aug-17	14-Aug-17	-344	[Gantt bar: Aug 01-17 to Aug 14-17]			
General Area & Corridor									
11772	MEP(EVB) - ABWF Works	12	20-Jul-17	02-Aug-17	-334	[Gantt bar: Jul 20-17 to Aug 02-17]			
11774	MEP(EVB) - E&M 1st fixing	30	15-Aug-17	18-Sep-17	-344	[Gantt bar: Aug 15-17 to Sep 18-17]			

- Current Milestone
- Level of Effort
- Baseline Milestone
- Actual Work
- Critical Remaining Work
- Remaining Work
- Project Baseline

Leighton Contractors (Asia) Limited Programme Update 40 (June 2017) THREE MONTH ROLLING

Project ID: H2613-U041
Baseline: DWP2d
Layout: Update Three Month Rolling U041
Page 25 of 30

Date	Revision	Checked	Approved
20-May-17	U039	AT	CW
20-Jun-17	U040	AT	CW

CWB(CC) - Commissioning Contract

TASK filters: 3 Months_4, 3MRP, No Original Sections, No Summary, Not HL.

Activity ID	Activity Name	Original Duration	Start	Finish	Total Float	2017					
						Jul	Aug	Sep	Oct		
E&M Testing & Commissioning / Statutory Inspection											
12572	MEP(EVB) - Submission of WWO46 (Part I, II) to WSD	0	20-Jul-17		-407						
12580a	MEP(EVB) - Genset submission comment from AECOM	24	08-Aug-17	04-Sep-17	-386						
12580b	MEP(EVB) - Genset re-submission and approval	24	05-Sep-17	03-Oct-17	-386						
12580	MEP(EVB) - Genset submission to EPD	0	04-Oct-17		-476						
12598	MEP(EVB) - DG submission to FSD	0	04-Oct-17		-476						
Administration Building (ADB)											
RC Structures (Portion Xa / Xb)											
Basement											
GL (D-F)											
13618d1	ADB - B/F (GL D-F) - Construct basement wall to G/F slab - Claims No.33	18	27-Mar-17 A	21-Jul-17	-368						
13618d2	ADB - B/F (GL D-F) - Construct walls and columns from basement to G/F slab - Claims No.33	18	22-Jul-17	11-Aug-17	-368						
13618e	ADB - B/F (GL D-F) - Backfilling (General fill) - Claims No.33	12	12-Aug-17	25-Aug-17	-368						
B-04 Sump Pump Room											
13228	ADB B-04 - Internal walls / Cast-in items	12	26-Aug-17	08-Sep-17	-368						
13230	ADB B-04 - Plinths for F.S. Pump	6	09-Sep-17	15-Sep-17	-368						
Basement (GL D-F) Other Rooms / Corridors / Staircase											
13234	ADB B/F (GL D-F) - Remaining Internal walls / Cast-in items	24	09-Sep-17	09-Oct-17	-362						
13236	ADB B/F (GL D-F) - Plinths / R.C. curbs	12	10-Oct-17	23-Oct-17	-362						
GL (P-R)											
13620c	ADB - B/F (GL P-R) - Construct water tanks (2 nos.) - Claim No.33	18	12-Jun-17 A	31-Jul-17	-382						
13620g	ADB - B/F (GL P-R) - Construct basement wall to bottom of 2nd layer of wailing - Claim No.33	12	01-Aug-17	14-Aug-17	-382						
13620h	ADB - B/F (GL P-R) - Demolition of 2nd layer strut and wailing - Claim No.33	7	15-Aug-17	22-Aug-17	-382						
13620d	ADB - B/F (GL P-R) - Construct basement wall to G/F slab - Claim No.33	12	23-Aug-17	05-Sep-17	-382						
13620e	ADB - B/F (GL P-R) - Backfilling - Claim No.33	6	06-Sep-17	12-Sep-17	-382						
B-13 F.S. Water Tank, Sprinkler Tank & Pump Room											
13240	ADB B-13 - Plinths for F.S. Pump	6	13-Sep-17	19-Sep-17	-359						
Basement (GL P-R) Other Rooms / Corridors / Staircase											
13246	ADB B/F (GL P-R) - Plinths / R.C. curbs	12	13-Sep-17	26-Sep-17	-353						
G/F											
GL (A - C)											
G/F (GL A - C) Other Rooms / Corridors / Staircase											
13148	ADB - G/F (GL A-C) - Plinths / R.C. curbs	12	08-Jun-17 A	22-Jun-17 A							

- Current Milestone
- Level of Effort
- Baseline Milestone
- Actual Work
- Critical Remaining Work
- Remaining Work
- Project Baseline

Leighton Contractors (Asia) Limited Programme Update 40 (June 2017) THREE MONTH ROLLING

Project ID: H2613-U041
Baseline: DWP2d
Layout: Update Three Month Rolling U041
Page 26 of 30

Date	Revision	Checked	Approved
20-May-17	U039	AT	CW
20-Jun-17	U040	AT	CW

CWB(CC) - Commissioning Contract

TASK filters: 3 Months_4, 3MRP, No Original Sections, No Summary, Not HL.

Activity ID	Activity Name	Original Duration	Start	Finish	Total Float	2017														
						Jul	Aug	Sep	Oct											
GL (C - G)																				
13592	ADB - G/F (GL C-G) - Formwork for column / walls	8	14-Jun-17 A	22-Jul-17	-353															
13594	ADB - G/F (GL C-G) - Rebar fixing for column / walls	10	24-Jul-17	03-Aug-17	-353															
13596	ADB - G/F (GL C-G) - Concrete for column / walls	1	04-Aug-17	04-Aug-17	-353															
13598	ADB - G/F (GL C-G) - Scaffolding for beam & slab	10	05-Aug-17	16-Aug-17	-353															
13600	ADB - G/F (GL C-G) - Decking / Formwork for beam & slab	8	17-Aug-17	25-Aug-17	-353															
13602	ADB - G/F (GL C-G) - Rebar for beam & slab	10	26-Aug-17	06-Sep-17	-353															
13604	ADB - G/F (GL C-G) - Close formwork for beam & slab	10	07-Sep-17	18-Sep-17	-353															
13606	ADB - G/F (GL C-G) - Concrete beam & slab	1	19-Sep-17	19-Sep-17	-353															
G-35 Computer Room																				
13150	ADB G-35 - Internal walls / Cast-in items	1	19-Sep-17	19-Sep-17	-347															
G/F (GL C - G) Other Rooms / Corridors / Staircase																				
13608	ADB - 1/F (GL C-G) - Remaining Internal walls / Cast-in items	1	19-Sep-17	19-Sep-17	-353															
13610	ADB - 1/F (GL C-G) - Plinths / R.C. curbs	30	20-Sep-17	26-Oct-17	-353															
GL (G - H)																				
G-21 F.S.Control Room																				
13172	ADB G-21 - Plinths for F.S. Pump	6	05-Jun-17 A	22-Jun-17 A																
GL (P - R)																				
13180	ADB - G/F (GL P-R) - G/F slab construction	24	13-Sep-17	12-Oct-17	-382															
13182	ADB - G/F (GL P-R) - Formwork for column / walls	8	13-Oct-17	21-Oct-17	-382															
13184	ADB - G/F (GL P-R) - Rebar fixing for column / walls	12	13-Oct-17	26-Oct-17	-382															
1/F																				
GL (A - C)																				
13202	ADB - 1/F (GL A-C) - Formwork for column / walls	6	05-Jun-17 A	21-Jun-17 A																
13204	ADB - 1/F (GL A-C) - Rebar fixing for column / walls	10	22-Jun-17 A	04-Jul-17 A																
13206	ADB - 1/F (GL A-C) - Concrete for column / walls	1	05-Jul-17 A	05-Jul-17 A																
13208	ADB - 1/F (GL A-C) - Scaffolding for beam & slab	12	06-Jul-17 A	08-Jul-17 A																
13210	ADB - 1/F (GL A-C) - Decking / Formwork for beam & slab	12	10-Jul-17 A	13-Jul-17 A																
13212	ADB - 1/F (GL A-C) - Rebar for beam & slab	12	11-Jul-17 A	15-Jul-17 A																
13214	ADB - 1/F (GL A-C) - Close formwork for beam & slab	12	17-Jul-17 A	21-Jul-17	-403															
13216	ADB - 1/F (GL A-C) - Concrete beam & slab (Roof Slab)	1	22-Jul-17	22-Jul-17	-403															
L1-08 Water Pump Room																				
13578	ADB - L1-09 - Internal walls / Cast-in items	1	24-Jul-17	24-Jul-17	-403															

- Current Milestone
- Level of Effort
- Baseline Milestone
- Actual Work
- Critical Remaining Work
- Remaining Work
- Project Baseline

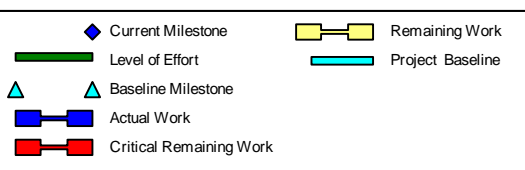
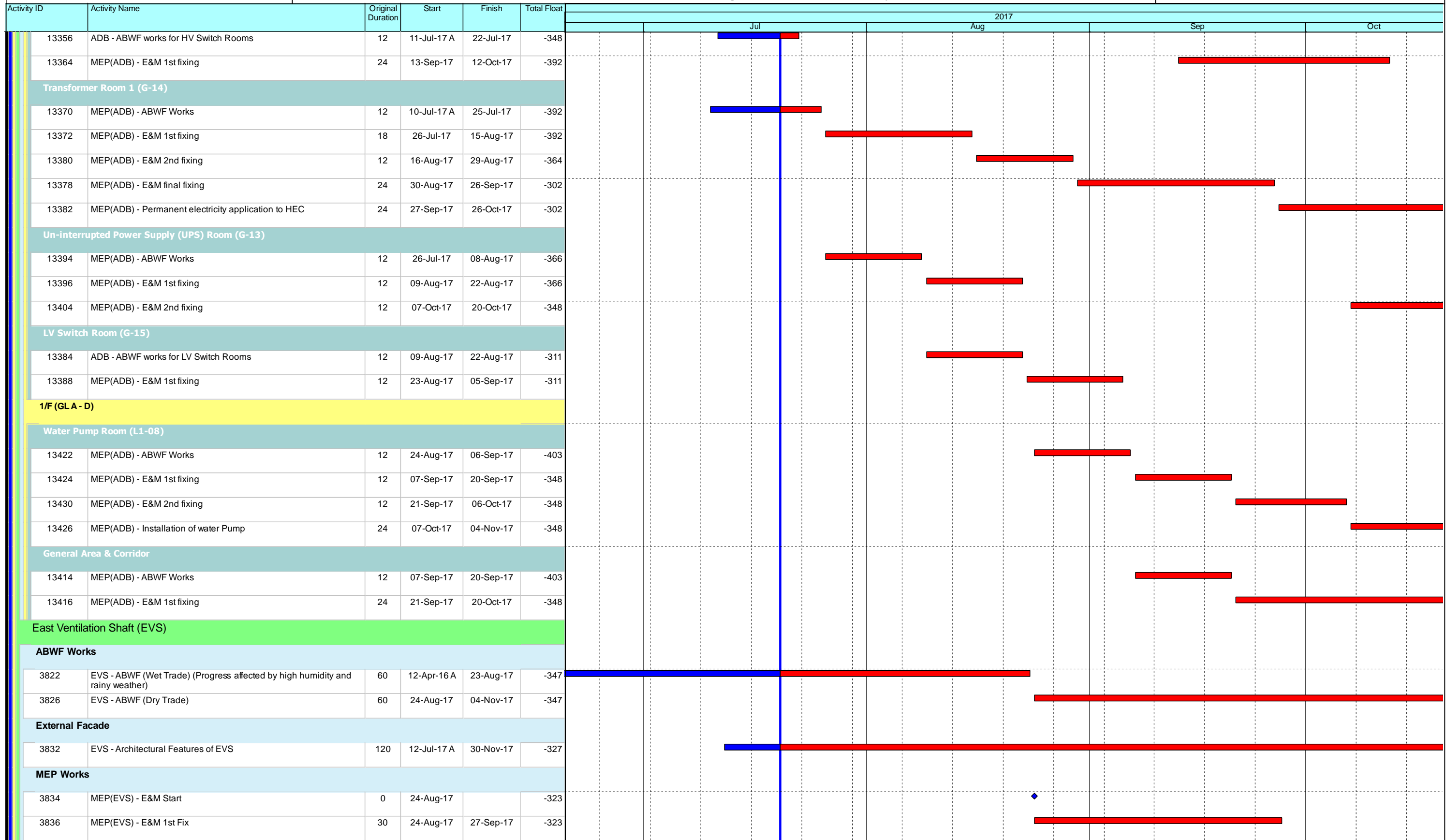
Leighton Contractors (Asia) Limited Programme Update 40 (June 2017) THREE MONTH ROLLING

Project ID: H2613-U041
Baseline: DWP2d
Layout: Update Three Month Rolling U041
Page 27 of 30

Date	Revision	Checked	Approved
20-May-17	U039	AT	CW
20-Jun-17	U040	AT	CW

CWB(CC) - Commissioning Contract

TASK filters: 3 Months_4, 3MRP, No Original Sections, No Summary, Not HL.



Leighton Contractors (Asia) Limited Programme Update 40 (June 2017) THREE MONTH ROLLING

Project ID: H2613-U041
Baseline: DWP2d
Layout: Update Three Month Rolling U041
Page 29 of 30

Date	Revision	Checked	Approved
20-May-17	U039	AT	CW
20-Jun-17	U040	AT	CW

